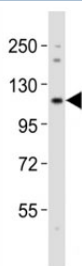


Notch1 Antibody (F53342)

Catalog No.	Formulation	Size
F53342-0.4ML	In 1X PBS, pH 7.4, with 0.09% sodium azide	0.4 ml
F53342-0.08ML	In 1X PBS, pH 7.4, with 0.09% sodium azide	0.08 ml

[Bulk quote request](#)

Availability	1-3 business days
Species Reactivity	Mouse
Format	Antigen affinity purified
Host	Rabbit
Clonality	Polyclonal (rabbit origin)
Isotype	Rabbit Ig
Purity	Antigen affinity
UniProt	Q01705
Applications	Western Blot : 1:2000
Limitations	This Notch1 antibody is available for research use only.



Western blot testing of Notch1 antibody at 1:2000 dilution + mouse lung lysate; Predicted molecular weight: ~ 270 kDa (full length), ~ 120 kDa (transmembrane fragment).

Description

Notch1 functions as a receptor for membrane-bound ligands Jagged1, Jagged2 and Delta1 to regulate cell-fate determination. It is involved in angiogenesis; negatively regulates endothelial cell proliferation and migration and angiogenic sprouting. [UniProt]

Learn more about NOTCH1 function, Notch signaling, and cell fate determination on our [NOTCH1 Antibody / Cell Fate Determination Receptor](#) page.

Application Notes

Titration of the Notch1 antibody may be required due to differences in protocols and secondary/substrate sensitivity.

Immunogen

This Notch1 antibody was produced from a rabbit immunized with a KLH conjugated synthetic peptide between 2403-2437 amino acids from the C-terminal region of mouse Notch1.

Storage

Aliquot the Notch1 antibody and store frozen at -20oC or colder. Avoid repeated freeze-thaw cycles.