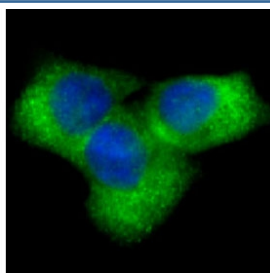


NOTCH1 Antibody [clone BGA-14] (RQ6458)

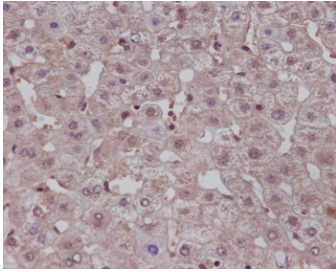
Catalog No.	Formulation	Size
RQ6458	Antibody in PBS with 0.02% sodium azide, 50% glycerol and 0.4-0.5mg/ml BSA	100 ul

[Bulk quote request](#)

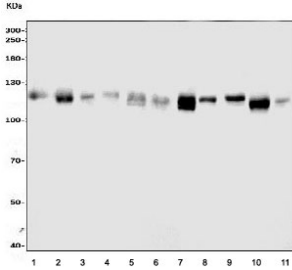
Availability	1-3 business days
Species Reactivity	Human, Mouse, Rat
Format	Purified
Host	Rabbit
Clonality	Rabbit Monoclonal
Isotype	Rabbit IgG
Clone Name	BGA-14
Purity	Antigen affinity purified
UniProt	P46531
Localization	Cytoplasmic, nuclear
Applications	Western Blot : 1:500-1:3000 Immunohistochemistry (FFPE) : 1:50-1:200 Immunofluorescence : 1:100-1:500
Limitations	This NOTCH1 antibody is available for research use only.



Immunofluorescent staining of human HeLa cells with NOTCH1 antibody.



IHC staining of FFPE human liver tissue with NOTCH1 antibody.



Western blot testing of human 1) HEK293, 2) K562, 3) U-2 OS, 4) Jurkat, 5) HeLa, 6) ThP-1, 7) Caco-2, 8) rat brain, 9) rat PC-12, 10) mouse lung and 11) mouse brain tissue lysate with NOTCH1 antibody. Expected molecular weight: ~ 270 kDa (full length), ~ 120 kDa (transmembrane fragment).

Description

Notch proteins are single-pass transmembrane receptors that regulate cell fate decisions during development.

Application Notes

Optimal dilution of the NOTCH1 antibody should be determined by the researcher.

Immunogen

A NOTCH1-specific peptide was used as the immunogen for the NOTCH1 antibody.

Storage

Store the NOTCH1 antibody at -20°C.