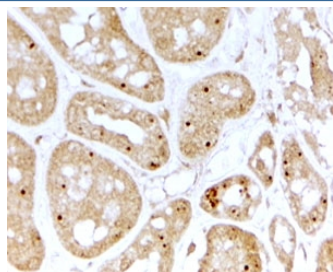


NOLC1 Antibody (R35506)

| Catalog No. | Formulation | Size |
|--------------|---|--------|
| R35506-100UG | 0.5 mg/ml in 1X TBS, pH7.3, with 0.5% BSA (US sourced) and 0.02% sodium azide | 100 ug |

[Bulk quote request](#)

| | |
|----------------------|---|
| Availability | 1-3 business days |
| Species Reactivity | Human |
| Predicted Reactivity | Cow, Dog, Mouse, Rat |
| Format | Antigen affinity purified |
| Host | Goat |
| Clonality | Polyclonal (goat origin) |
| Isotype | Goat Ig |
| Purity | Antigen affinity |
| Gene ID | 9221 |
| Applications | Immunohistochemistry (FFPE) : 2-4ug/ml ELISA (peptide) LOD : 1:16000 |
| Limitations | This NOLC1 antibody is available for research use only. |



IHC testing of FFPE human kidney with NOLC1 antibody at 2ug/ml. HIER: steamed with pH6 citrate buffer, HRP-staining. Nucleolar staining in convoluted tubules is seen.

Description

Additional name(s) for this target protein: Nucleolar and coiled-body phosphoprotein 1

Application Notes

Optimal dilution of the NOLC1 antibody should be determined by the researcher.

Immunogen

Amino acids QVNSIKFDSE were used as the immunogen for this NOLC1 antibody.

Storage

Aliquot and store the NOLC1 antibody at -20oC.