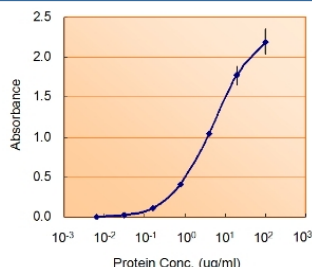


NODAL Antibody (R33725)

Catalog No.	Formulation	Size
R33725-100UG	0.5 mg/ml in 1X TBS, pH7.3, with 0.5% BSA (US sourced) and 0.02% sodium azide	100 ug

[Bulk quote request](#)

Availability	1-3 business days
Species Reactivity	Human
Predicted Reactivity	Mouse, Rat
Format	Antigen affinity purified
Host	Goat
Clonality	Polyclonal (goat origin)
Isotype	Goat Ig
Purity	Antigen affinity
Gene ID	4838
Applications	Enzyme ImmunoAssay : used as capture for recombinant protein (coat at 1-2ug/ml) ELISA (peptide) LOD : 1:8000
Limitations	This NODAL antibody is available for research use only.



Sandwich ELISA with NODAL antibody at 1.5ug/ml as the detect

Description

Additional name(s) for this target protein: Mouse nodal homolog precursor

Application Notes

Optimal dilution of the NODAL antibody should be determined by the researcher.

Immunogen

Amino acids ECPNPVGEEFH were used as the immunogen for this NODAL antibody.

Storage

Aliquot and store the NODAL antibody at -20oC.