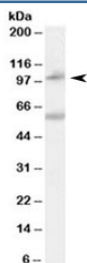


NOD2 Antibody (R34436)

Catalog No.	Formulation	Size
R34436-100UG	0.5 mg/ml in 1X TBS, pH7.3, with 0.5% BSA (US sourced) and 0.02% sodium azide	100 ug

[Bulk quote request](#)

Availability	1-3 business days
Species Reactivity	Human
Predicted Reactivity	Mouse, Rat
Format	Antigen affinity purified
Host	Goat
Clonality	Polyclonal (goat origin)
Isotype	Goat Ig
Purity	Antigen affinity
Gene ID	64127
Applications	Western Blot : 0.1-0.3ug/ml ELISA (peptide) LOD : 1:64000
Limitations	This NOD2 antibody is available for research use only.



Western blot testing of human peripheral blood mononucleocyte lysate with NOD2 antibody at 0.1ug/ml. Molecular weight: the expected ~100kDa band and the additional ~60kDa band are both blocked by the immunizing peptide.

Description

Additional name(s) for this target protein: Nucleotide-binding oligomerization domain-containing protein 2, caspase recruitment domain family, member 15; CARD15

Application Notes

Optimal dilution of the NOD2 antibody should be determined by the researcher.

Immunogen

Amino acids KFRFTDRERHCSPD were used as the immunogen for this NOD2 antibody.

Storage

Aliquot and store the NOD2 antibody at -20oC.