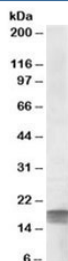


## nn Antibody (R34170)

Catalog No.	Formulation	Size
R34170-100UG	0.5 mg/ml in 1X TBS, pH7.3, with 0.5% BSA (US sourced) and 0.02% sodium azide	100 ug

[Bulk quote request](#)

Availability	1-3 business days
Species Reactivity	Human
Predicted Reactivity	Dog, Mouse
Format	Antigen affinity purified
Host	Goat
Clonality	Polyclonal (goat origin)
Isotype	Goat Ig
Purity	Antigen affinity
Gene ID	644096
Applications	Western Blot : 0.3-1ug/ml ELISA (peptide) LOD : 1:16000
Limitations	This SDHAF1 antibody is available for research use only.



Western blot testing of human cerebellum lysate with SDHAF1 antibody at 0.3ug/ml.  
Predicted molecular weight: ~13kDa, observed here at ~19kDa.

## Description

Additional name(s) for this target protein: Succinate dehydrogenase complex assembly factor 1

## Application Notes

Optimal dilution of the SDHAF1 antibody should be determined by the researcher.

## Immunogen

Amino acids HDSTGAPETRPDGR were used as the immunogen for this SDHAF1 antibody.

## Storage

Aliquot and store the SDHAF1 antibody at -20oC.