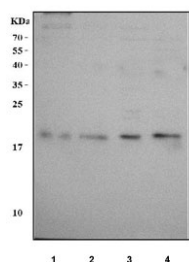


## NME6 Antibody / Nucleoside diphosphate kinase 6 (RQ8417)

Catalog No.	Formulation	Size
RQ8417	0.5mg/ml if reconstituted with 0.2ml sterile DI water	100 ug

**Bulk quote request**

<b>Availability</b>	1-3 business days
<b>Species Reactivity</b>	Human
<b>Format</b>	Antigen affinity purified
<b>Clonality</b>	Polyclonal (rabbit origin)
<b>Isotype</b>	Rabbit IgG
<b>Purity</b>	Antigen affinity purified
<b>Buffer</b>	Lyophilized from 1X PBS with 2% Trehalose
<b>UniProt</b>	O75414
<b>Applications</b>	Western Blot : 0.5-1ug/ml Direct ELISA : 0.1-0.5ug/ml
<b>Limitations</b>	This NME6 antibody is available for research use only.



Western blot testing of human 1) LNCaP, 2) U-2 OS, 3) Caco-2 and 4) A431 cell lysate with NME6 antibody. Predicted molecular weight: ~13/18/21 kDa (multiple isoforms).

### Description

Nucleoside diphosphate (NDP) kinases (EC 2.7.4.6), such as NME6, are ubiquitous enzymes that catalyze transfer of gamma-phosphates, via a phosphohistidine intermediate, between nucleoside and dioxynucleoside tri- and diphosphates.

### Application Notes

Optimal dilution of the NME6 antibody should be determined by the researcher.

## Immunogen

An E.coli-derived human recombinant protein (M1-A186) was used as the immunogen for the NME6 antibody.

## Storage

After reconstitution, the NME6 antibody can be stored for up to one month at 4oC. For long-term, aliquot and store at -20oC. Avoid repeated freezing and thawing.