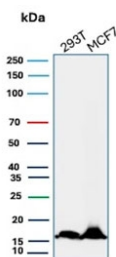


## NME2 Antibody / Nucleoside diphosphate kinase B / NDKB [clone NME2/4160] (V4505)

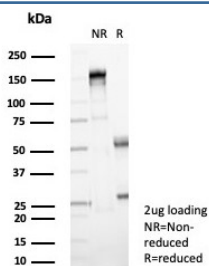
Catalog No.	Formulation	Size
V4505-100UG	0.2 mg/ml in 1X PBS with 0.1 mg/ml BSA (US sourced), 0.05% sodium azide	100 ug
V4505-20UG	0.2 mg/ml in 1X PBS with 0.1 mg/ml BSA (US sourced), 0.05% sodium azide	20 ug
V4505SAF-100UG	1 mg/ml in 1X PBS; BSA free, sodium azide free	100 ug

[Bulk quote request](#)

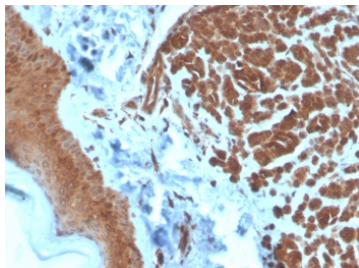
Availability	1-3 business days
Species Reactivity	Human
Format	Purified
Host	Mouse
Clonality	Monoclonal (mouse origin)
Isotype	Mouse IgG2, kappa
Clone Name	NME2/4160
Purity	Protein A/G affinity
UniProt	P22392
Localization	Cytoplasm, Nucleus
Applications	Western Blot : 1-2ug/ml Immunohistochemistry (FFPE) : 1-2ug/ml for 30 min at RT
Limitations	This NME2 antibody is available for research use only.



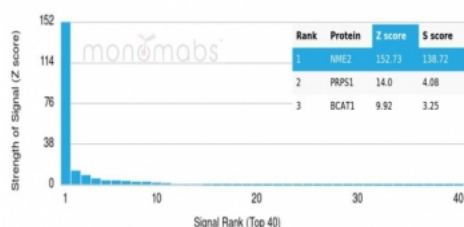
Western blot testing of human 293T and MCF-7 cell lysate with NME2 antibody (clone NME2/4160). Predicted molecular weight ~17 kDa.



SDS-PAGE analysis of purified, BSA-free NME2 antibody (clone NME2/4160) as confirmation of integrity and purity.



IHC staining of FFPE human skin tissue with NME2 antibody (clone NME2/4160). HIER: boil tissue sections in pH 9 10mM Tris with 1mM EDTA for 20 min and allow to cool before testing.



Analysis of a HuProt(TM) microarray containing more than 19,000 full-length human proteins using NME2 antibody (clone NME2/4160). Z- and S- Score: The Z-score represents the strength of a signal that a monoclonal antibody (in combination with a fluorescently-tagged anti-IgG secondary antibody) produces when binding to a particular protein on the HuProt(TM) array. Z-scores are described in units of standard deviations (SD's) above the mean value of all signals generated on that array. If targets on HuProt(TM) are arranged in descending order of the Z-score, the S-score is the difference (also in units of SD's) between the Z-score. S-score therefore represents the relative target specificity of a mAb to its intended target. A mAb is considered to specific to its intended target, if the mAb has an S-score of at least 2.5. For example, if a mAb binds to protein X with a Z-score of 43 and to protein Y with a Z-score of 14, then the S-score for the binding of that mAb to protein X is equal to 29.

## Description

The nm23 gene, a potential suppressor of metastasis, was originally identified by differential hybridization between two murine melanoma sub-lines, one with a high and the second with a low metastatic capacity. Highly metastatic sub-lines exhibit much lower levels of nm23 than less metastatic cells. Based on sequence analysis, nm23 appears highly related to nucleotide diphosphate kinases (NDP). In humans, NDP kinases A and B are identical to two isoforms of human nm23 homologs, namely nm23-H1 and H2, respectively. nm23-H2 is identical in sequence to PuF, a transcription factor that binds to nuclease hypersensitive elements at positions 142 to 115 of the human c-Myc promoter.

## Application Notes

Optimal dilution of the NME2 antibody should be determined by the researcher.

## Immunogen

Recombinant full-length human protein was used as the immunogen for the NME2 antibody.

## Storage

Aliquot the NME2 antibody and store frozen at -20°C or colder. Avoid repeated freeze-thaw cycles.

