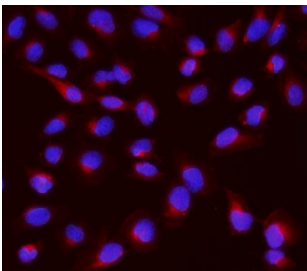


## NME2 Antibody / NM23-H2 (R30928)

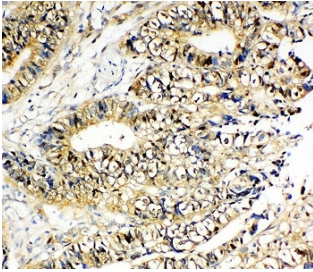
Catalog No.	Formulation	Size
R30928	0.5mg/ml if reconstituted with 0.2ml sterile DI water	100 ug

[Bulk quote request](#)

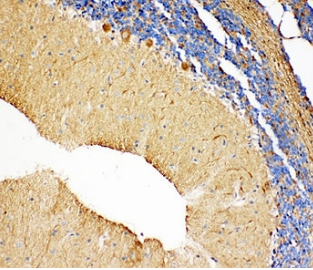
<b>Availability</b>	1-3 business days
<b>Species Reactivity</b>	Human, Mouse, Rat
<b>Format</b>	Antigen affinity purified
<b>Host</b>	Rabbit
<b>Clonality</b>	Polyclonal (rabbit origin)
<b>Isotype</b>	Rabbit IgG
<b>Purity</b>	Antigen affinity
<b>Buffer</b>	Lyophilized from 1X PBS with 2.5% BSA and 0.025% sodium azide/thimerosal
<b>UniProt</b>	P22392
<b>Applications</b>	Western Blot : 0.5-1ug/ml Immunohistochemistry (FFPE) : 0.5-1ug/ml Immunocytochemistry : 0.5-1ug/ml Immunofluorescence : 2-4ug/ml Flow Cytometry : 1-3ug/million cells
<b>Limitations</b>	This NME2 antibody is available for research use only.



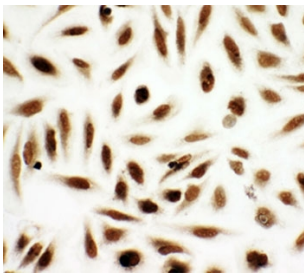
IF/ICC staining of FFPE human U-2 OS cells with GNB1 antibody (red) at 2ug/ml and DAPI nuclear stain (blue). HIER: steam section in pH6 citrate buffer for 20 min.



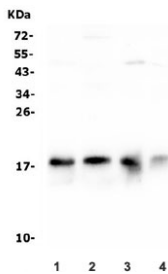
IHC-P: NME2 antibody testing of human intestinal cancer tissue



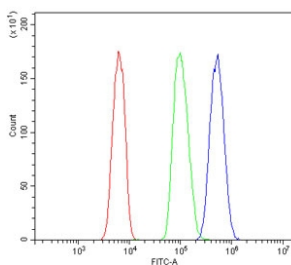
IHC-P: NME2 antibody testing of rat cerebellum tissue



ICC testing of NME2 antibody and HeLa cells



Western blot testing of 1) rat heart, 2) rat brain, 3) mouse heart and 4) mouse brain lysate with NME2 antibody. Predicted molecular weight: ~17 kDa.



Flow cytometry testing of human HL-60 cells with NME2 antibody at 1ug/million cells (blocked with goat sera); Red=cells alone, Green=isotype control, Blue= NME2 antibody.

## Description

NME2 (NME/NM23 nucleoside diphosphate kinase 2) also called non-metastatic cells 2, protein (NM23B) expressed in, NM23-H2, NM23B or NDPKB, is identical to the beta subunit of human erythrocyte NDP kinase. Using Northern blot analysis, Masse et al.(2002) detected high expression of mouse NME2, which they called nm23-M2, in heart, liver, and kidney, with intermediate expression in skeletal muscle. In situ hybridization of 15-day postcoitum mouse embryos showed ubiquitous expression. The mouse and human genes contain 5 exons and span about 6.0 kb. The NME2 gene is mapped on 17q21.33. Srivastava et al.(2006) concluded that histidine phosphorylation regulates KCa3.1 channel activity and that NME2 is critical to the channel activity and the activation of CD4 T cells.

## Application Notes

The stated application concentrations are suggested starting amounts. Titration of the NME2 antibody may be required due to differences in protocols and secondary/substrate sensitivity.

## Immunogen

Amino acids 137-152 (EELVDYKSCAHDWVYE-human) were used as the immunogen for this NME2 antibody.

## Storage

After reconstitution, the NME2 antibody can be stored for up to one month at 4oC. For long-term, aliquot and store at -20oC. Avoid repeated freezing and thawing.