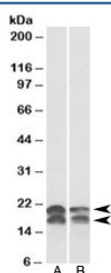


## NME1 Antibody (R33690)

Catalog No.	Formulation	Size
R33690-100UG	0.5 mg/ml in 1X TBS, pH7.3, with 0.5% BSA (US sourced) and 0.02% sodium azide	100 ug

[Bulk quote request](#)

Availability	1-3 business days
Species Reactivity	Human
Format	Antigen affinity purified
Host	Goat
Clonality	Polyclonal (goat origin)
Isotype	Goat Ig
Purity	Antigen affinity
Gene ID	4830
Applications	Western Blot : 0.01-0.03ug/ml ELISA (peptide) LOD : 1:128000
Limitations	This NME1 antibody is available for research use only.



Western blot testing of A549 [A] and HeLa [B] lysates with NME1 antibody at 0.01ug/ml.  
Predicted molecular weight: ~20/17kDa (isoforms a/b).

## Description

Additional name(s) for this target protein: Non-metastatic cells 1, protein (NM23A) expressed in

## Application Notes

Optimal dilution of the NME1 antibody should be determined by the researcher.

## Immunogen

Amino acids DYTSCAQNWIYE were used as the immunogen for this NME1 antibody. This sequence is common to isoforms a and b.

## Storage

Aliquot and store the NME1 antibody at -20oC.