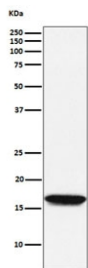


NME1 Antibody / NM23A [clone AEID-14] (RQ5488)

Catalog No.	Formulation	Size
RQ5488	Antibody in PBS with 0.02% sodium azide, 50% glycerol and 0.4-0.5mg/ml BSA	100 ul

[Bulk quote request](#)

Availability	1-2 weeks
Species Reactivity	Human
Format	Purified
Host	Rabbit
Clonality	Rabbit Monoclonal
Isotype	Rabbit IgG
Clone Name	AEID-14
Purity	Affinity purified
UniProt	P15531
Applications	Western Blot : 1:500-1:2000
Limitations	This NME1 antibody is available for research use only.



Western blot testing of human Jurkat cell lysate with NME1 antibody. Predicted molecular weight ~17 kDa.

Description

This gene (NME1) was identified because of its reduced mRNA transcript levels in highly metastatic cells. Nucleoside diphosphate kinase (NDK) exists as a hexamer composed of 'A' (encoded by this gene) and 'B' (encoded by NME2) isoforms. Mutations in this gene have been identified in aggressive neuroblastomas. Two transcript variants encoding different isoforms have been found for this gene. Co-transcription of this gene and the neighboring downstream gene (NME2) generates naturally-occurring transcripts (NME1-NME2), which encodes a fusion protein comprised of sequence sharing identity with each individual gene product. [RefSeq]

Application Notes

Optimal dilution of the NME1 antibody should be determined by the researcher.

Immunogen

A synthetic peptide specific to human NM23A / NME1 was used as the immunogen for the NME1 antibody.

Storage

Store the NME1 antibody at -20oC.