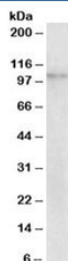


NLRX1 Antibody (R34795)

Catalog No.	Formulation	Size
R34795-100UG	0.5 mg/ml in 1X TBS, pH7.3, with 0.5% BSA (US sourced) and 0.02% sodium azide	100 ug

[Bulk quote request](#)

Availability	1-3 business days
Species Reactivity	Human
Predicted Reactivity	Rat
Format	Antigen affinity purified
Clonality	Polyclonal (goat origin)
Isotype	Goat Ig
Purity	Antigen affinity
UniProt	Q86UT6
Gene ID	79671
Applications	Western Blot : 1-3ug/ml ELISA (peptide) LOD : 1:16000
Limitations	This NLRX1 antibody is available for research use only.



Western blot testing of human breast cancer lysate with NLRX1 antibody at 2ug/ml.
Predicted molecular weight: ~108/102kDa (isoforms 1/2).

Description

Additional name(s) for this target protein: NOD9, NLR family member X1; NLRX1

Application Notes

Optimal dilution of the NLRX1 antibody should be determined by the researcher.

Immunogen

Amino acids NFSGETLDSTDPSN were used as the immunogen for this NLRX1 antibody. This sequence is common to isoforms 1 and 2 (UniProt# Q86UT6).

Storage

Aliquot and store the NLRX1 antibody at -20oC.