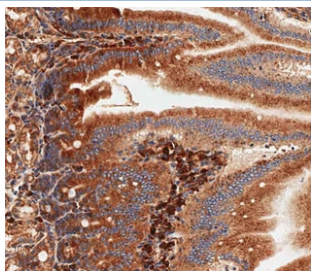


## Nlrp6 Antibody (F44953)

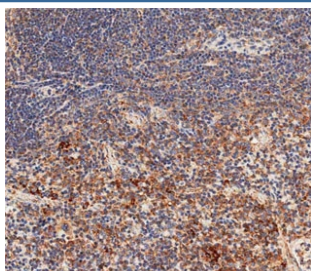
Catalog No.	Formulation	Size
F44953-0.4ML	In 1X PBS, pH 7.4, with 0.09% sodium azide	0.4 ml
F44953-0.08ML	In 1X PBS, pH 7.4, with 0.09% sodium azide	0.08 ml

[Bulk quote request](#)

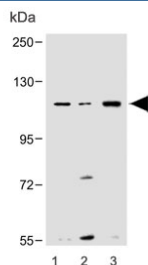
<b>Availability</b>	1-3 business days
<b>Species Reactivity</b>	Mouse
<b>Predicted Reactivity</b>	Rat
<b>Format</b>	Antigen affinity purified
<b>Clonality</b>	Polyclonal (rabbit origin)
<b>Isotype</b>	Rabbit Ig
<b>Purity</b>	Antigen affinity
<b>UniProt</b>	Q91WS2
<b>Applications</b>	Western Blot : 1:1000 Immunohistochemistry (FFPE) : 1:250-1:500
<b>Limitations</b>	This Nlrp6 antibody is available for research use only.



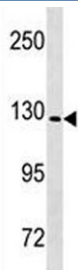
IHC testing of FFPE mouse small intestine tissue with Nlrp6 antibody. HIER: steam section in pH9 EDTA buffer for 20 min and allow to cool prior to staining.



IHC testing of FFPE mouse spleen tissue with Nlrp6 antibody. HIER: steam section in pH9 EDTA buffer for 20 min and allow to cool prior to staining.



Western blot testing of mouse 1) small intestine, 2) liver and 3) spleen lysate with Nlrp6 antibody. Predicted molecular weight ~97 kDa.



Western blot testing of mouse heart lysate with Nlrp6 antibody. Predicted molecular weight ~97 kDa.

## Description

Nlrp6 may mediate activation of CASP1 via ASC and promote activation of NF-kappa-B (By similarity).

## Application Notes

Titration of the Nlrp6 antibody may be required due to differences in protocols and secondary/substrate sensitivity.

## Immunogen

A portion of amino acids 343-372 from the mouse protein was used as the immunogen for this Nlrp6 antibody.

## Storage

Aliquot the Nlrp6 antibody and store frozen at -20oC or colder. Avoid repeated freeze-thaw cycles.