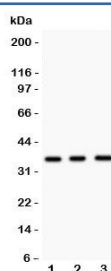


NKX2.5 Antibody (R31706)

Catalog No.	Formulation	Size
R31706	0.5mg/ml if reconstituted with 0.2ml sterile DI water	100 ug

Bulk quote request

Availability	1-3 business days
Species Reactivity	Human, Mouse
Format	Antigen affinity purified
Host	Rabbit
Clonality	Polyclonal (rabbit origin)
Isotype	Rabbit IgG
Purity	Antigen affinity
Buffer	Lyophilized from 1X PBS with 2.5% BSA and 0.025% sodium azide
Gene ID	1482
Applications	Western Blot : 0.5-1ug/ml
Limitations	This NKX2.5 antibody is available for research use only.



Western blot testing of NKX2.5 antibody and Lane 1: mouse spleen; 2: mouse heart; 3: human HeLa lysate. Predicted molecular weight ~35 kDa, routinely observed at 35~45kDa.

Description

Homeobox protein Nkx-2.5, also known as NKX2E or CSX, is a protein that in humans is encoded by the NKX2-5 gene. It is mapped to 5q35.1. Homeobox-containing genes play critical roles in regulating tissue-specific gene expression essential for tissue differentiation, as well as determining the temporal and spatial patterns of development. Nkx2-5 and Tbx5 directly bound to the promoter of the gene encoding cardiac-specific natriuretic peptide precursor type A (NPPA) in tandem, and both transcription factors showed synergistic activation. Nkx2-5 is essential in cardiac development, and mutations in the protein cause various congenital heart malformations.

Application Notes

The stated application concentrations are suggested starting amounts. Titration of the NKX2.5 antibody may be required due to differences in protocols and secondary/substrate sensitivity.

Immunogen

An amino acid sequence from the middle region of human Homeobox protein Nkx-2.5 (AKDPRAEKKELCALQKAVELEKTEADNAER) was used as the immunogen for this NKX2.5 antibody.

Storage

After reconstitution, the NKX2.5 antibody can be stored for up to one month at 4°C. For long-term, aliquot and store at -20°C. Avoid repeated freezing and thawing.