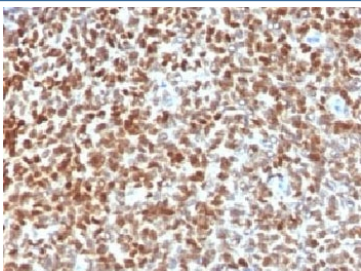


NKX2.2 Antibody (V3314)

| Catalog No. | Formulation | Size |
|----------------|--|--------|
| V3314-100UG | 0.2 mg/ml in 1X PBS with 0.1 mg/ml BSA (US sourced) and 0.05% sodium azide | 100 ug |
| V3314-20UG | 0.2 mg/ml in 1X PBS with 0.1 mg/ml BSA (US sourced) and 0.05% sodium azide | 20 ug |
| V3314SAF-100UG | 1 mg/ml in 1X PBS; BSA free, sodium azide free | 100 ug |

Bulk quote request

| | |
|---------------------------|--|
| Species Reactivity | Human |
| Format | Purified |
| Clonality | Polyclonal (rabbit origin) |
| Isotype | Rabbit IgG |
| Purity | Protein A affinity chromatography |
| Buffer | 1X PBS, pH 7.4 |
| UniProt | O95096 |
| Gene ID | 4821 |
| Localization | Nuclear |
| Applications | Immunohistochemistry (FFPE) : 1-2ug/ml for 30 min at RT |
| Limitations | This NKX2.2 antibody is available for research use only. |



IHC testing of FFPE Ewings sarcoma with NKX2.2 antibody. HIER: steam sections in 10mM citrate buffer, pH 6.0, for 10-20 min.

Description

Expression of NKX2.2 has been found in neuroendocrine tumors of the gut, making it a potential marker for the study of gastrointestinal neuroendocrine tumors. More recently, NKX2.2 protein was identified as a target of EWS-FLI-1, the fusion

protein specific to Ewing sarcoma, and was shown to be differentially upregulated in Ewing sarcoma on the basis of array-based gene expression analysis. Antibody to NKX2.2 detects a valuable marker for Ewing sarcoma, with a sensitivity of 93% and a specificity of 89%, and aids in the differential diagnosis of small round cell tumors.

Application Notes

Titering of the NKX2.2 antibody may be required for optimal performance.

Immunogen

A human partial recombinant protein was used as the immunogen for this NKX2.2 antibody.

Storage

Store the NKX2.2 antibody at 2-8oC (with azide) or aliquot and store at -20oC or colder (without azide).