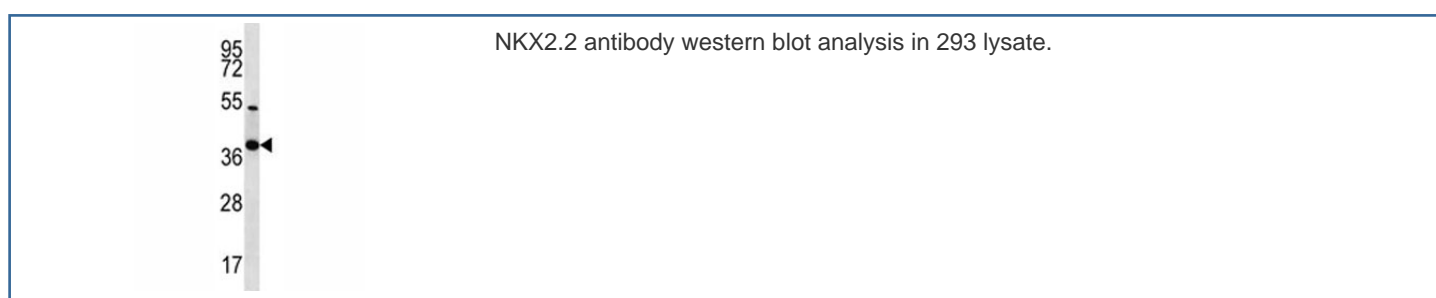


## NKX2.2 Antibody (F42417)

Catalog No.	Formulation	Size
F42417-0.4ML	In 1X PBS, pH 7.4, with 0.09% sodium azide	0.4 ml
F42417-0.08ML	In 1X PBS, pH 7.4, with 0.09% sodium azide	0.08 ml

[Bulk quote request](#)

<b>Availability</b>	1-3 business days
<b>Species Reactivity</b>	Human
<b>Format</b>	Antigen affinity purified
<b>Clonality</b>	Polyclonal (rabbit origin)
<b>Isotype</b>	Rabbit Ig
<b>Purity</b>	Antigen affinity
<b>UniProt</b>	O95096
<b>Applications</b>	Western Blot : 1:1000
<b>Limitations</b>	This NKX2.2 antibody is available for research use only.



## Description

The protein encoded by this gene contains a homeobox domain and may be involved in the morphogenesis of the central nervous system. This gene is found on chromosome 20 near NKX2-4, and these two genes appear to be duplicated on chromosome 14 in the form of TITF1 and NKX2-8. The encoded protein is likely to be a nuclear transcription factor.

## Application Notes

Titration of the NKX2.2 antibody may be required due to differences in protocols and secondary/substrate sensitivity.

## Immunogen

A portion of amino acids 2-2 from the human protein was used as the immunogen for this NKX2.2 antibody.

## **Storage**

Aliquot the NKX2.2 antibody and store frozen at -20oC or colder. Avoid repeated freeze-thaw cycles.