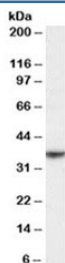


## NKG2D Antibody (R34696)

| Catalog No.  | Formulation   | Size   |
|--------------|---|--------|
| R34696-100UG | 0.5 mg/ml in 1X TBS, pH7.3, with 0.5% BSA (US sourced) and 0.02% sodium azide | 100 ug |

[Bulk quote request](#)

|                      |  |
|----------------------|--|
| Availability         | 1-3 business days  |
| Species Reactivity   | Human  |
| Predicted Reactivity | Mouse, Rat   |
| Format               | Antigen affinity purified                                  |
| Host                 | Goat   |
| Clonality            | Polyclonal (goat origin)                                   |
| Isotype              | Goat Ig  |
| Purity               | Antigen affinity   |
| Gene ID              | 22914  |
| Applications         | Western Blot : 0.3-1ug/ml<br>ELISA (peptide) LOD : 1:32000 |
| Limitations          | This NKG2D antibody is available for research use only.    |



Western blot testing of human spleen lysate with NKG2D antibody at 0.3ug/ml. Predicted molecular weight ~25/35kDa (unmodified/glycosylated).

### Description

Additional name(s) for this target protein: Killer cell lectin-like receptor subfamily K, member 1; NKG2-D type II integral membrane protein; KLRK1

### Application Notes

Optimal dilution of the NKG2D antibody should be determined by the researcher.

## **Immunogen**

Amino acids KVYSKEDQDLLK were used as the immunogen for this NKG2D antibody.

## **Storage**

Aliquot and store the NKG2D antibody at -20oC.