

NKD2 Antibody / Naked-2 (F54639)

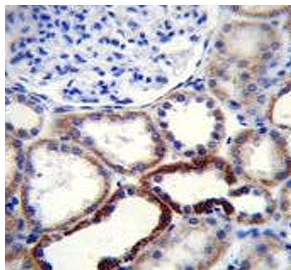
Catalog No.	Formulation	Size
F54639-0.4ML	In 1X PBS, pH 7.4, with 0.09% sodium azide	0.4 ml
F54639-0.08ML	In 1X PBS, pH 7.4, with 0.09% sodium azide	0.08 ml

[Bulk quote request](#)

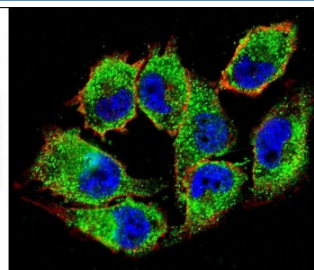
Availability	1-3 business days
Species Reactivity	Human
Format	Purified
Host	Rabbit
Clonality	Polyclonal (rabbit origin)
Isotype	Rabbit Ig
Purity	Antigen affinity purified
UniProt	Q969F2
Localization	Cytoplasmic
Applications	Flow Cytometry : 1:25 (1x10 ⁶ cells) Immunofluorescence : 1:25 Immunohistochemistry (FFPE) : 1:25 Western Blot : 1:500-1:2000
Limitations	This NKD2 antibody is available for research use only.



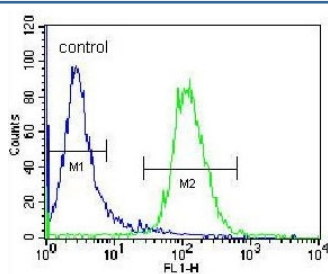
Western blot testing of human Jurkat cell lysate with NKD2 antibody. Expected molecular weight: 50-60 kDa.



IHC testing of FFPE human kidney tissue with NKD2 antibody. HIER: steam section in pH6 citrate buffer for 20 min and allow to cool prior to staining.



Immunofluorescent staining of human A375 cells with NKD2 antibody (green), DAPI nuclear stain (blue) and anti-Actin (red).



Flow cytometry testing of human Jurkat cells with NKD2 antibody; Blue=isotype control, Green= NKD2 antibody.

Description

Protein naked cuticle homolog 2, also called Naked-2 and NKD2, is a cell autonomous antagonist of the canonical Wnt signaling pathway. [UniProt]

Application Notes

The stated application concentrations are suggested starting points. Titration of the NKD2 antibody may be required due to differences in protocols and secondary/substrate sensitivity.

Immunogen

A portion of amino acids 366-393 from the human protein was used as the immunogen for the NKD2 antibody.

Storage

Aliquot the NKD2 antibody and store frozen at -20oC or colder. Avoid repeated freeze-thaw cycles.