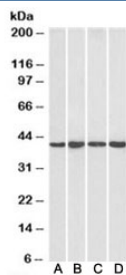


NIPP1 Antibody (R33722)

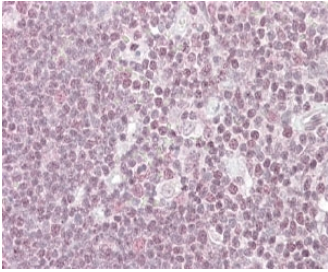
Catalog No.	Formulation	Size
R33722-100UG	0.5 mg/ml in 1X TBS, pH7.3, with 0.5% BSA (US sourced) and 0.02% sodium azide	100 ug

[Bulk quote request](#)

Availability	1-3 business days
Species Reactivity	Human
Predicted Reactivity	Cow, Dog, Mouse, Rat
Format	Antigen affinity purified
Host	Goat
Clonality	Polyclonal (goat origin)
Isotype	Goat Ig
Purity	Antigen affinity
Gene ID	5511
Localization	Nuclear
Applications	Western Blot : 1-2ug/ml Immunohistochemistry (FFPE) : 2.5-5ug/ml ELISA (peptide) LOD : 1:32000
Limitations	This NIPP1 antibody is available for research use only.



Western blot testing of human HeLa [A], HepG2 [B], Jurkat [C] and mouse NIH3T3 [D] nuclear lysate with NIPP1 antibody at 1ug/ml. Predicted molecular weight: ~39kDa.



IHC staining of FFPE human thymus with NIPP1 antibody at 4ug/ml. HIER: steamed with pH6 citrate buffer, AP-staining. Speckled staining of the nuclei is seen.

Description

Additional name(s) for this target protein: Protein phosphatase 1, regulatory (inhibitor) subunit 8; PPP1R8

Application Notes

Optimal dilution of the NIPP1 antibody should be determined by the researcher.

Immunogen

Amino acids EAWPGKKTPSLLI were used as the immunogen for this NIPP1 antibody.

Storage

Aliquot and store the NIPP1 antibody at -20oC.