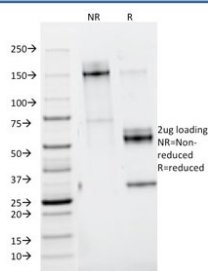


## Nidogen Antibody [clone ELM1] (V8402)

Catalog No.	Formulation	Size
V8402-100UG	0.2 mg/ml in 1X PBS with 0.1 mg/ml BSA (US sourced) and 0.05% sodium azide	100 ug
V8402-20UG	0.2 mg/ml in 1X PBS with 0.1 mg/ml BSA (US sourced) and 0.05% sodium azide	20 ug
V8402SAF-100UG	1 mg/ml in 1X PBS; BSA free, sodium azide free	100 ug

**Bulk quote request**

<b>Availability</b>	1-3 business days
<b>Species Reactivity</b>	Mouse
<b>Format</b>	Purified
<b>Clonality</b>	Monoclonal (rat origin)
<b>Isotype</b>	Rat IgG2a, kappa
<b>Clone Name</b>	ELM1
<b>Purity</b>	Protein G affinity chromatography
<b>UniProt</b>	P10493
<b>Localization</b>	Basement membrane
<b>Applications</b>	ELISA : 2-4ug/ml for coating; order Ab without BSA
<b>Limitations</b>	This Nidogen antibody is available for research use only.



SDS-PAGE analysis of purified, BSA-free Nidogen antibody (clone ELM1) as confirmation of integrity and purity.

## Description

Entactin/Nidogen is a ubiquitous multi-domain basement membrane protein. Basement membranes are the earliest extracellular matrices produced during embryogenesis. They are synthesized and incorporated into the supramolecular

architecture of several components, including laminins, Collagen IV, Nidogen and proteoglycans. Nidogen/Entactin, a sulfated glycoprotein, acts as a link between the extracellular matrix molecules Laminin 1 and Collagen Type IV, and thereby participates in the assembly of basement membranes. Nidogen is synthesized and secreted in primary and established mesenchymal peritubular cells and myoepithelial cells, and it affects adhesion of peritubular cells in an autocrine manner. Nidogen is expressed during embryonic and fetal development exclusively in fully developed basement membranes of the ectoderm and is not expressed in the developing endodermal basement membrane or in membranes disrupted during mesoderm formation. This MAb does not cross-react with other basement membrane components or fibronectin.

## **Application Notes**

Optimal dilution of the Nidogen antibody should be determined by the researcher.

## **Immunogen**

A murine EHS laminin preparation was used as the immunogen for the Nidogen antibody.

## **Storage**

Store the Nidogen antibody at 2-8oC (with azide) or aliquot and store at -20oC or colder (without azide).