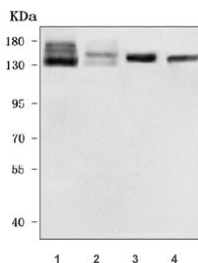


## NHS-like protein 2 Antibody / NHSL2 (RQ8259)

Catalog No.	Formulation	Size
RQ8259	0.5mg/ml if reconstituted with 0.2ml sterile DI water	100 ug

[Bulk quote request](#)

<b>Availability</b>	1-3 business days
<b>Species Reactivity</b>	Human, Mouse, Rat
<b>Format</b>	Antigen affinity purified
<b>Host</b>	Rabbit
<b>Clonality</b>	Polyclonal (rabbit origin)
<b>Isotype</b>	Rabbit IgG
<b>Purity</b>	Antigen affinity purified
<b>Buffer</b>	Lyophilized from 1X PBS with 2% Trehalose
<b>UniProt</b>	Q5HYW2
<b>Applications</b>	Western Blot : 0.5-1ug/ml Direct ELISA : 0.1-0.5ug/ml
<b>Limitations</b>	This NHS-like protein 2 antibody is available for research use only.



Western blot testing of 1) human SH-SY5Y, 2) human RT4, 3) rat brain and 4) mouse brain tissue lysate with NHS-like protein 2 antibody. Predicted molecular weight ~133 kDa.

### Description

Predicted to enable calcium ion binding activity. Predicted to be involved in cell differentiation. Predicted to be active in cytoplasm.

### Application Notes

Optimal dilution of the NHS-like protein 2 antibody should be determined by the researcher.

## Immunogen

E. coli-derived recombinant human protein (amino acids Q596-D1042) was used as the immunogen for the NHS-like protein 2 antibody.

## Storage

After reconstitution, the NHS-like protein 2 antibody can be stored for up to one month at 4oC. For long-term, aliquot and store at -20oC. Avoid repeated freezing and thawing.