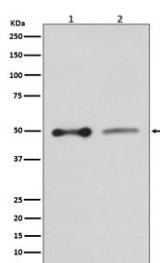


NHERF1 Antibody / SLC9A3R1 / EBP50 [clone IIH-19] (RQ4707)

Catalog No.	Formulation	Size
RQ4707	Antibody in PBS with 0.02% sodium azide, 50% glycerol and 0.4-0.5mg/ml BSA	100 ul

[Bulk quote request](#)

Availability	1-2 weeks
Species Reactivity	Human, Rat
Format	Purified
Host	Rabbit
Clonality	Rabbit Monoclonal
Isotype	Rabbit IgG
Clone Name	IIH-19
Purity	Affinity purified
UniProt	O14745
Applications	Western Blot : 1:500-1:2000
Limitations	This NHERF1 antibody is available for research use only.



Western blot testing of human HepG2 (left) and rat PC-12 (right) lysate with NHERF1 antibody. Predicted molecular weight ~38 kDa but routinely observed at ~50 kDa.

Description

The SLC9A3R1 gene encodes a sodium/hydrogen exchanger regulatory cofactor. Na(+)/H(+) exchange regulatory cofactor NHE-RF1 (also called SLC9A3 regulator 1 and Ezrin-radixin-moesin-binding phosphoprotein 50) interacts with and regulates various proteins including the cystic fibrosis transmembrane conductance regulator and G-protein coupled receptors such as the beta2-adrenergic receptor and the parathyroid hormone 1 receptor. The protein also interacts with proteins that function as linkers between integral membrane and cytoskeletal proteins. The protein localizes to actin-rich structures including membrane ruffles, microvilli, and filopodia. Mutations in this gene result in hypophosphatemic

nephrolithiasis/osteoporosis type 2, and loss of heterozygosity of this gene is implicated in breast cancer. [RefSeq]

Application Notes

Optimal dilution of the NHERF1 antibody should be determined by the researcher.

Immunogen

A synthetic peptide specific to human NHERF1 was used as the immunogen for the NHERF1 antibody.

Storage

Store the NHERF1 antibody at -20oC.