

NHE1 Antibody / SLC9A1 (R31571)

Catalog No.	Formulation	Size
R31571	0.5mg/ml if reconstituted with 0.2ml sterile DI water	100 ug

[Bulk quote request](#)

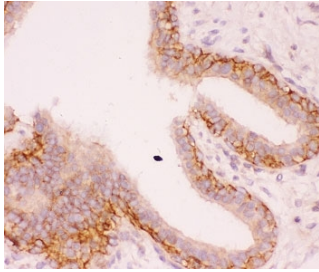
Availability	1-3 business days
Species Reactivity	Human, Mouse, Rat
Format	Antigen affinity purified
Host	Rabbit
Clonality	Polyclonal (rabbit origin)
Isotype	Rabbit IgG
Purity	Antigen affinity
Buffer	Lyophilized from 1X PBS with 2.5% BSA and 0.025% sodium azide
Gene ID	6548
Applications	Western Blot : 0.5-1ug/ml Immunohistochemistry (FFPE) : 0.5-1ug/ml
Limitations	This NHE1 antibody is available for research use only.



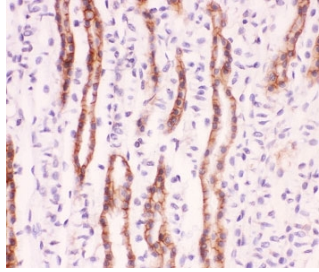
Western blot testing of NHE1 antibody and Lane 1: rat PC12; 2: human MCF-7.
Predicted/observed size ~91KD



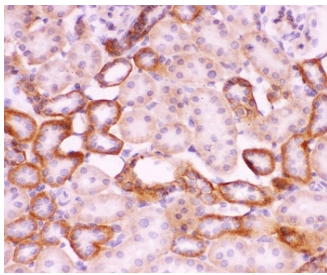
Western blot testing of NHE1 antibody recombinant human protein (0.5ng)



IHC-P: NHE1 antibody testing of human breast cancer tissue



IHC-P staining of mouse kidney tissue



IHC-P staining of rat kidney tissue

Description

NHE1, also known as SLC9A1, is an isoform of sodium-hydrogen antiporter that in humans is encoded by the SLC9A1 gene. It is mapped to 1p36.11. NHE1 is a ubiquitous membrane-bound enzyme involved in pH regulation of vertebrate cells. It is specifically inhibited by the diuretic drug amiloride and activated by a variety of signals including growth factors, mitogens, neurotransmitters, tumor promoters, and others. The plasma membrane ion exchanger NHE1 acts as an anchor for actin filaments to control the integrity of the cortical cytoskeleton. And a structural role for NHE1 in regulating the cortical cytoskeleton that is independent of its function as an ion exchanger. It is a plausible candidate gene for human essential hypertension.

Application Notes

The stated application concentrations are suggested starting amounts. Titration of the NHE1 antibody may be required due to differences in protocols and secondary/substrate sensitivity.

Immunogen

Human recombinant partial protein (AA 543-815) was used as the immunogen for this NHE1 antibody.

Storage

After reconstitution, the NHE1 antibody can be stored for up to one month at 4°C. For long-term, aliquot and store at -20°C. Avoid repeated freezing and thawing.

