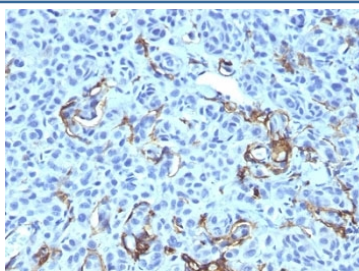


NGF Receptor Antibody Cocktail [clone NGFR5 + NTR/912] (V2766)

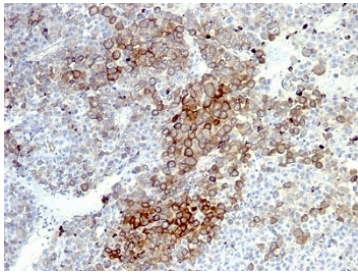
Catalog No.	Formulation	Size
V2766-100UG	0.2 mg/ml in 1X PBS with 0.1 mg/ml BSA (US sourced) and 0.05% sodium azide	100 ug
V2766-20UG	0.2 mg/ml in 1X PBS with 0.1 mg/ml BSA (US sourced) and 0.05% sodium azide	20 ug
V2766SAF-100UG	1 mg/ml in 1X PBS; BSA free, sodium azide free	100 ug
V2766IHC-7ML	Prediluted in 1X PBS with 0.1 mg/ml BSA (US sourced) and 0.05% sodium azide; *For IHC use only*	7 ml

[Bulk quote request](#)

Availability	1-3 business days
Species Reactivity	Human
Format	Purified
Clonality	Monoclonal (mouse origin)
Isotype	Mouse IgG1, kappa
Clone Name	NGFR5 + NTR/912
Purity	Protein G affinity chromatography
UniProt	P08138
Localization	Cell surface and cytoplasmic
Applications	Flow Cytometry : 0.5-1ug/10 ⁶ cells Immunofluorescence : 1-2ug/ml Immunohistochemistry (FFPE) : 0.5-1ug/ml for 30 min at RT
Limitations	This NGF Receptor antibody cocktail is available for research use only.



IHC: Formalin-fixed, paraffin-embedded human melanoma stained with NGF Receptor antibody (NGFR5 + NTR/912).



IHC: Formalin-fixed, paraffin-embedded human melanoma stained with NGF Receptor antibody (NGFR5 + NTR/912).

Description

It recognizes a glycoprotein of 75kDa, identified as low affinity Nerve Growth Factor (NGF) Receptor (p75NGFR) or Neurotrophin Receptor (p75NTR). NGFR is expressed in various neural crest cells and their tumors such as melanocytes, melanomas, neuroblastomas, pheochromocytomas and neurofibromas. Reportedly, anti-NGFR is a reliable marker for desmoplastic and neurotropic melanomas. NGFR is expressed in mature non-neural cells such as perivascular cells, dental pulp cells, lymphoid follicular dendritic cells, basal epithelium of oral mucosa and hair follicles, prostate basal cells, and myoepithelial cells. Anti-NGFR stains the myoepithelial cells of breast ducts and intra-lobular fibroblasts of breast ducts.

Application Notes

Optimal dilution of the NGF Receptor antibody cocktail should be determined by the researcher.

1. Staining of formalin-fixed tissues requires boiling tissue sections in 10mM Citrate buffer, pH 6.0, for 10-20 min followed by cooling at RT for 20 min
2. The prediluted format is supplied in a dropper bottle and is optimized for use in IHC. After epitope retrieval step (if required), drip mAb solution onto the tissue section and incubate at RT for 30 min.

Immunogen

NGFR from A875 melanoma cells (NGFR5) and recombinant human protein (NTR/912) were used as the immunogen for the NGF Receptor antibody cocktail.

Storage

Store the NGF Receptor antibody cocktail at 2-8°C (with azide) or aliquot and store at -20°C or colder (without azide).