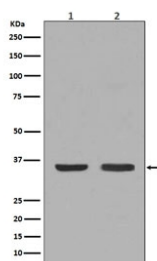


## NGF Antibody / Beta Nerve Growth Factor [clone BDE-14] (RQ4871)

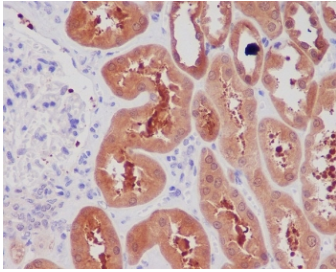
Catalog No.	Formulation	Size
RQ4871	Antibody in PBS with 0.02% sodium azide, 50% glycerol and 0.4-0.5mg/ml BSA	100 ul

[Bulk quote request](#)

Availability	1-2 weeks
Species Reactivity	Human, Mouse
Format	Purified
Host	Rabbit
Clonality	Rabbit Monoclonal
Isotype	Rabbit IgG
Clone Name	BDE-14
Purity	Affinity purified
UniProt	P01138
Localization	Secreted
Applications	Western Blot : 1:500-1:2000 Immunohistochemistry (FFPE) : 1:50-1:200
Limitations	This NGF antibody is available for research use only.



Western blot testing of 1) mouse thyroid and 2) human HeLa lysate with NGF antibody. Predicted molecular weight ~27 kDa (dimer).



IHC staining of FFPE human kidney tissue with NGF antibody. HIER: boil tissue sections in pH6, 10mM citrate buffer, for 10-20 min and allow to cool before testing.

## Description

Nerve growth factor is important for the development and maintenance of the sympathetic and sensory nervous systems. [UniProt]

## Application Notes

Optimal dilution of the NGF antibody should be determined by the researcher.

## Immunogen

A synthetic peptide specific to human NGF / Beta Nerve Growth Factor was used as the immunogen for the NGF antibody.

## Storage

Store the NGF antibody at -20oC.