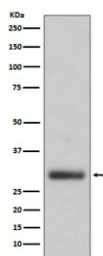


Neutrophil Elastase Antibody [clone AOCI-5] (RQ5209)

Catalog No.	Formulation	Size
RQ5209	Antibody in PBS with 0.02% sodium azide, 50% glycerol and 0.4-0.5mg/ml BSA	100 ul

[Bulk quote request](#)

Availability	1-2 weeks
Species Reactivity	Human
Format	Purified
Host	Rabbit
Clonality	Rabbit Monoclonal
Isotype	Rabbit IgG
Clone Name	AOCI-5
Purity	Affinity purified
UniProt	P08246
Applications	Western Blot : 1:500-1:2000
Limitations	This Neutrophil Elastase antibody is available for research use only.



Western blot testing of human HL60 cell lysate with Neutrophil Elastase antibody.
Expected molecular weight: 29-35 kDa.

Description

Elastases form a subfamily of serine proteases that hydrolyze many proteins in addition to elastin. Humans have six elastase genes which encode structurally similar proteins. The encoded preproprotein is proteolytically processed to generate the active protease. Following activation, this protease hydrolyzes proteins within specialized neutrophil lysosomes, called azurophil granules, as well as proteins of the extracellular matrix. The enzyme may play a role in degenerative and inflammatory diseases through proteolysis of collagen-IV and elastin. This protein also degrades the outer membrane protein A (OmpA) of *E. coli* as well as the virulence factors of such bacteria as *Shigella*, *Salmonella* and

Yersinia. [RefSeq]

Application Notes

Optimal dilution of the Neutrophil Elastase antibody should be determined by the researcher.

Immunogen

A synthetic peptide specific to human Neutrophil Elastase / ELANE was used as the immunogen for the Neutrophil Elastase antibody.

Storage

Store the Neutrophil Elastase antibody at -20oC.