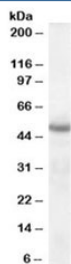


Neuroserpin Antibody (R36223)

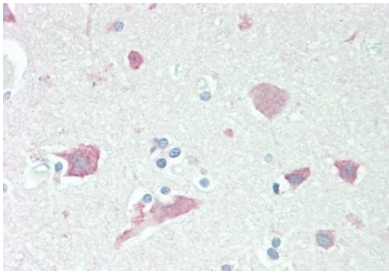
Catalog No.	Formulation	Size
R36223-100UG	0.5 mg/ml in 1X TBS, pH7.3, with 0.5% BSA (US sourced) and 0.02% sodium azide	100 ug

[Bulk quote request](#)

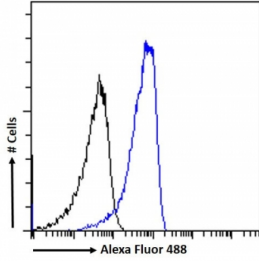
Availability	1-3 business days
Species Reactivity	Human
Predicted Reactivity	Mouse, Rat, Pig, Cow
Format	Antigen affinity purified
Host	Goat
Clonality	Polyclonal (goat origin)
Isotype	Goat Ig
Purity	Antigen affinity
Gene ID	5274
Applications	Western Blot : 1-3ug/ml Immunohistochemistry (FFPE) : 5ug/ml Flow Cytometry : 10ug/million cells ELISA (peptide) LOD : 1:32000
Limitations	This Neuroserpin antibody is available for research use only.



Western blot testing of human brain lysate with Neuroserpin antibody at 1ug/ml.
Predicted molecular weight: ~46 kDa.



IHC staining of FFPE human cortex tissue with Neuroserpin antibody at 5ug/ml. Required HIER: steamed antigen retrieval with pH6 citrate buffer; AP-staining.



FACS testing of fixed and permeabilized human HeLa cells with GADD34 antibody (blue) at 10ug/10⁶ cells in 0.2ml and naive goat Ig (black).

Description

Additional name(s) for this target protein: SERPINI1; serpin peptidase inhibitor, clade I (neuroserpin), member 1

Application Notes

Optimal dilution of the Neuroserpin antibody should be determined by the researcher.

Immunogen

Amino acids TMNTSGHDFEEL were used as the immunogen for this Neuroserpin antibody.

Storage

Aliquot and store the Neuroserpin antibody at -20oC.