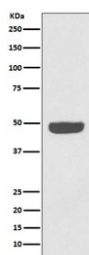


Neuron Specific Enolase Antibody / NSE / ENO2 [clone FBI-5] (RQ5267)

Catalog No.	Formulation	Size
RQ5267	Antibody in PBS with 0.02% sodium azide, 50% glycerol and 0.4-0.5mg/ml BSA	100 ul

[Bulk quote request](#)

Availability	1-2 weeks
Species Reactivity	Human
Format	Purified
Clonality	Rabbit Monoclonal
Isotype	Rabbit IgG
Clone Name	FBI-5
Purity	Affinity purified
UniProt	P09104
Applications	Western Blot : 1:5000-1:10000
Limitations	This Neuron Specific Enolase antibody is available for research use only.



Western blot testing of human HeLa cell lysate with Neuron Specific Enolase antibody. Predicted molecular weight ~47 kDa.

Description

The ENO2 gene encodes one of the three enolase isoenzymes found in mammals. This isoenzyme, a homodimer, is found in mature neurons and cells of neuronal origin. A switch from alpha enolase to gamma enolase occurs in neural tissue during development in rats and primates. [RefSeq]

Application Notes

Optimal dilution of the Neuron Specific Enolase antibody should be determined by the researcher.

Immunogen

A synthetic peptide specific to human NSE / ENO2 was used as the immunogen for the Neuron Specific Enolase antibody.

Storage

Store the Neuron Specific Enolase antibody at -20oC.