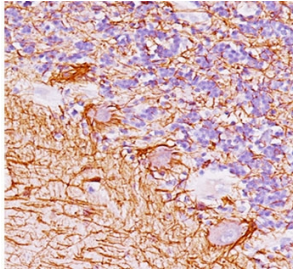


Neurofilament Antibody / Heavy [clone NF421] (V2212)

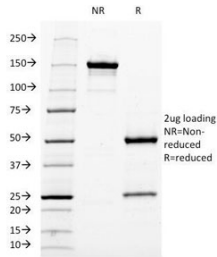
Catalog No.	Formulation	Size
V2212-100UG	0.2 mg/ml in 1X PBS with 0.1 mg/ml BSA (US sourced) and 0.05% sodium azide	100 ug
V2212-20UG	0.2 mg/ml in 1X PBS with 0.1 mg/ml BSA (US sourced) and 0.05% sodium azide	20 ug
V2212SAF-100UG	1 mg/ml in 1X PBS; BSA free, sodium azide free	100 ug
V2212IHC-7ML	Prediluted in 1X PBS with 0.1 mg/ml BSA (US sourced) and 0.05% sodium azide; *For IHC use only*	7 ml

[Bulk quote request](#)

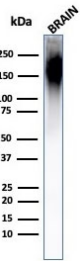
Species Reactivity	Human, Mouse, Rat
Format	Purified
Host	Mouse
Clonality	Monoclonal (mouse origin)
Isotype	Mouse IgG1, kappa
Clone Name	NF421
Purity	Protein G purified Neurofilament antibody
Buffer	1X PBS, pH 7.4
Gene ID	4744
Localization	Cytoplasmic, membranous
Applications	Western Blot : 1-2ug/ml Flow Cytometry : 0.5-1ug/million cells Immunofluorescence : 1-2ug/ml Immunohistochemistry (FFPE) : 0.25-0.5ug/ml for 30 min at RT
Limitations	This Neurofilament antibody is available for research use only.



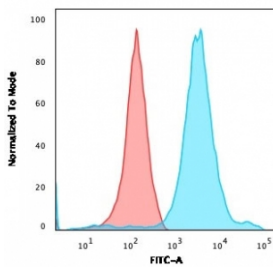
IHC testing of FFPE human cerebellum with Neurofilament antibody (clone NF421).



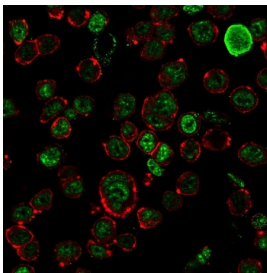
SDS-PAGE Analysis of Purified, BSA-Free Neurofilament Antibody (clone NF421). Confirmation of Integrity and Purity of the Antibody.



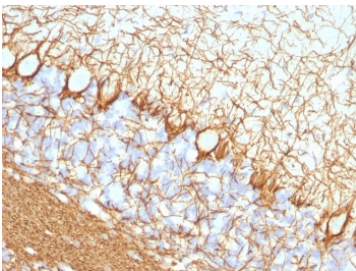
Western blot testing of human brain lysate with Neurofilament antibody (clone NF421).



Flow cytometry testing of permeabilized human HEK293 cells with Neurofilament antibody (clone NF421); Red=isotype control, Blue= Neurofilament antibody.



Immunofluorescent staining of permeabilized human HEK293 cells with Neurofilament antibody (clone NF421, green) and Phalloidin (red).



IHC testing of FFPE rat cerebellum with Neurofilament antibody (clone NF421).

Neurofilaments make up the main structural elements of axons and dendrites and are found in neurons, peripheral nerves, and sympathetic ganglion cells. Neurofilaments consist of three major subunits with molecular weights of 68kDa (NF-L), 160kDa (NF-M) and 200kDa (NF-H). The fourth neurofilament subunit is alpha internexin in the central nervous system and peripherin in the peripheral nervous system.

Application Notes

The usable concentrations in the Applications Details are suggestions only. The use of different protocols/secondaries/substrates may require the Neurofilament antibody to be titered for optimal performance.

1. The NF421 antibody is specific to the heavy subunit.
2. FFPE tissues requires boiling tissue sections in 10mM citrate buffer, pH 6.0, for 10-20 min followed by cooling at RT for 20 minutes.
3. The prediluted format is supplied in a dropper bottle and is optimized for use in IHC. After epitope retrieval step (if required), drip mAb solution onto the tissue section and incubate at RT for 30 min.

Immunogen

Human recombinant Neurofilament protein was used as the immunogen. (1)

Storage

Store the Neurofilament antibody at 2-8oC (with azide) or aliquot and store at -20oC or colder (without azide).

References (2)