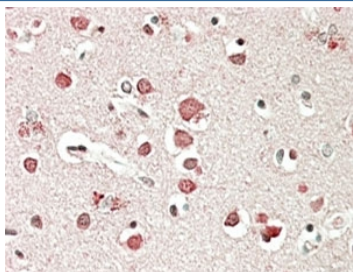


Neurobeachin Antibody (R33442)

Catalog No.	Formulation	Size
R33442-100UG	0.5 mg/ml in 1X TBS, pH7.3, with 0.5% BSA (US sourced) and 0.02% sodium azide	100 ug

[Bulk quote request](#)

Availability	1-3 business days
Species Reactivity	Human, Mouse
Predicted Reactivity	Cow, Dog
Format	Antigen affinity purified
Host	Goat
Clonality	Polyclonal (goat origin)
Isotype	Goat Ig
Purity	Antigen affinity
Gene ID	26960
Applications	Immunohistochemistry (FFPE) : 5-10ug/ml ELISA (peptide) LOD : 1:4000
Limitations	This Neurobeachin antibody is available for research use only.



IHC staining of FFPE human cerebral cortex with Neurobeachin antibody at 5ug/ml.
HIER: steamed with pH6 citrate buffer, AP-staining.

Description

Additional name(s) for this target protein: NBEA

Application Notes

Optimal dilution of the Neurobeachin antibody should be determined by the researcher.

1. This Neurobeachin antibody will detect isoforms 1 and 2.

Immunogen

Amino acids DFNRWHYEHQNRV were used as the immunogen for this Neurobeachin antibody.

Storage

Aliquot and store the Neurobeachin antibody at -20oC.