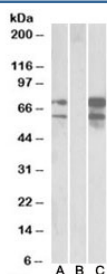


Neurexin 1 Antibody / Neurexin 1 beta / NRXN1 (R34405)

Catalog No.	Formulation	Size
R34405-100UG	0.5 mg/ml in 1X TBS, pH7.3, with 0.5% BSA (US sourced) and 0.02% sodium azide	100 ug

[Bulk quote request](#)

Availability	1-3 business days
Species Reactivity	Human
Predicted Reactivity	Mouse, Rat, Dog
Format	Antigen affinity purified
Host	Goat
Clonality	Polyclonal (goat origin)
Isotype	Goat Ig
Purity	Antigen affinity
UniProt	P58400
Applications	Western Blot : 0.5-1.5ug/ml ELISA (peptide) LOD : 1:32000
Limitations	This Neurexin 1 antibody is available for research use only.



Western blot of HEK293 lysate overexpressing human NRXN1-FLAG probed with Neurexin 1 antibody (0.5ug/ml) in Lane A and anti-FLAG (1/3000) in lane C. Mock-transfected HEK293 probed with Neurexin 1 antibody (1ug/ml) in Lane B. Predicted molecular weight: ~162/49 kDa (isoforms 1/2).

Description

Additional name(s) for this target protein: NRXN1

Application Notes

Optimal dilution of the Neurexin 1 antibody should be determined by the researcher.

Immunogen

Amino acids KEKQPSSAKSSNKN were used as the immunogen for this Neurexin 1 antibody.

Storage

Aliquot and store the Neurexin 1 antibody at -20oC.