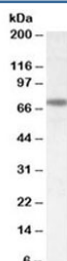


Netrin 1 Antibody / NTN1 (R34435)

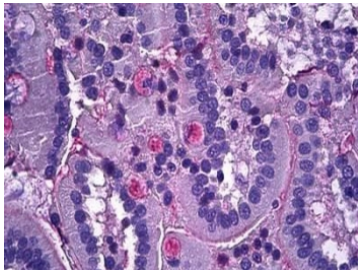
Catalog No.	Formulation	Size
R34435-100UG	0.5 mg/ml in 1X TBS, pH7.3, with 0.5% BSA (US sourced) and 0.02% sodium azide	100 ug

[Bulk quote request](#)

Availability	1-3 business days
Species Reactivity	Human, Rat
Predicted Reactivity	Cow, Dog, Mouse
Format	Antigen affinity purified
Clonality	Polyclonal (goat origin)
Isotype	Goat Ig
Purity	Antigen affinity
Gene ID	9423
Localization	Cytoplasmic, secreted
Applications	Western Blot : 0.5-2ug/ml IHC (FFPE) : 3.75ug/ml ELISA (peptide) LOD : 1:32000
Limitations	This Netrin 1 antibody is available for research use only.



Western blot testing of rat brain lysate with Netrin 1 antibody at 0.5ug/ml. Expected molecular weight: 68-75 kDa depending on glycosylation level.



IHC testing of FFPE human intestinal tissue with Netrin 1 antibody at 3.75ug/ml.
Required HIER: steamed antigen retrieval with pH6 citrate buffer; AP-staining.

Description

Additional name(s) for this target protein: NTN1L; NTN1

Application Notes

Optimal dilution of the Netrin 1 antibody should be determined by the researcher.

Immunogen

Amino acids KFQQREKKGKCKKA were used as the immunogen for this Netrin 1 antibody.

Storage

Aliquot and store the Netrin 1 antibody at -20oC.