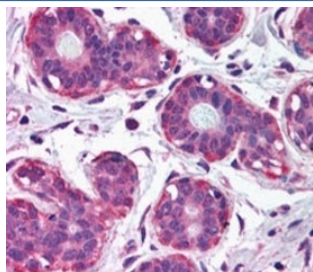


NET1 Antibody (R33507)

Catalog No.	Formulation	Size
R33507-100UG	0.5 mg/ml in 1X TBS, pH7.3, with 0.5% BSA (US sourced) and 0.02% sodium azide	100 ug

[Bulk quote request](#)

Availability	1-3 business days
Species Reactivity	Human
Predicted Reactivity	Dog, Mouse, Rat
Format	Antigen affinity purified
Host	Goat
Clonality	Polyclonal (goat origin)
Isotype	Goat Ig
Purity	Antigen affinity
Gene ID	10276
Applications	Immunohistochemistry (FFPE) : 2.5-5ug/ml ELISA (peptide) LOD : 1:16000
Limitations	This NET1 antibody is available for research use only.



IHC testing of FFPE human breast with NET1 antibody at 2.5ug/ml. HIER: steamed with pH6 citrate buffer, AP-staining.

Description

Additional name(s) for this target protein: Neuroepithelial cell transforming gene 1

Application Notes

Optimal dilution of the NET1 antibody should be determined by the researcher.

Immunogen

Amino acids DKLEYLDEKQRDPR were used as the immunogen for this NET1 antibody.

Storage

Aliquot and store the NET1 antibody at -20oC.