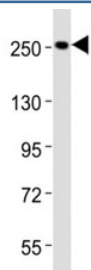


## Nestin Antibody (F47834)

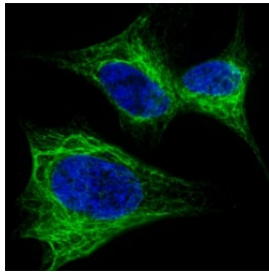
Catalog No.	Formulation	Size
F47834-0.4ML	In 1X PBS, pH 7.4, with 0.09% sodium azide	0.4 ml
F47834-0.08ML	In 1X PBS, pH 7.4, with 0.09% sodium azide	0.08 ml

[Bulk quote request](#)

<b>Availability</b>	1-3 business days
<b>Species Reactivity</b>	Human
<b>Format</b>	Antigen affinity purified
<b>Host</b>	Rabbit
<b>Clonality</b>	Polyclonal (rabbit origin)
<b>Isotype</b>	Rabbit Ig
<b>Purity</b>	Antigen affinity
<b>UniProt</b>	P48681
<b>Localization</b>	Cytoplasmic, membranous
<b>Applications</b>	Immunofluorescence : 1:200 Western Blot : 1:1000 IHC (Paraffin) : 1:50-1:100 Flow Cytometry : 1:10-1:50
<b>Limitations</b>	This Nestin antibody is available for research use only.



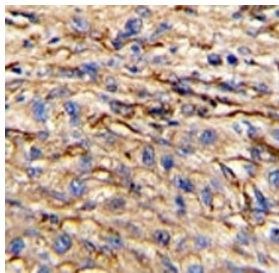
Western blot testing of Nestin antibody at 1:2000 dilution + HeLa lysate; Predicted molecular weight ~177 kDa but can be observed at up to 280 kDa.



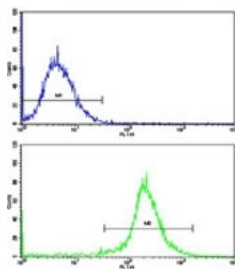
Fluorescent confocal image of SY5Y cells stained with Nestin antibody at 1:200. Note the highly specific localization of the Nestin immunosignal to the intermediate filaments.



Western blot analysis of Nestin antibody and HepG2 lysate



IHC analysis of FFPE human hepatocarcinoma stained with Nestin antibody



Flow cytometric analysis of HepG2 cells using Nestin antibody (bottom histogram) compared to a negative control cell (top histogram). FITC-conjugated goat-anti-rabbit secondary Ab was used for the analysis.

## Description

Nestin is a class VI intermediate filament protein expressed predominantly in stem cells of the neural tube but absent from virtually all differentiated CNS cells. In the CNS, nestin is downregulated upon differentiation and replaced by neurofilaments. Transient expression of nestin has been postulated as a key step committing cells to the neural differentiation pathway. Nestin expression has also been observed in pancreatic hematopoietic stem cell populations.

## Application Notes

Titration of the Nestin antibody may be required due to differences in protocols and secondary/substrate sensitivity.

## Immunogen

A portion of amino acids 1389-1416 from the human protein was used as the immunogen for this Nestin antibody.

## Storage

Aliquot the Nestin antibody and store frozen at -20°C or colder. Avoid repeated freeze-thaw cycles.

