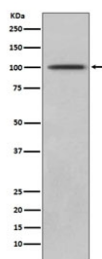


## Neprilysin Antibody / CD10 [clone GEH-13] (RQ5217)

Catalog No.	Formulation	Size
RQ5217	Antibody in PBS with 0.02% sodium azide, 50% glycerol and 0.4-0.5mg/ml BSA	100 ul

[Bulk quote request](#)

Availability	1-2 weeks
Species Reactivity	Human
Format	Purified
Clonality	Rabbit Monoclonal
Isotype	Rabbit IgG
Clone Name	GEH-13
Purity	Affinity purified
UniProt	P08473
Applications	Western Blot : 1:1000-1:2000
Limitations	This Neprilysin antibody is available for research use only.



Western blot testing of human Jurkat cell lysate with Neprilysin antibody. Routinely visualized at ~100 kDa.

## Description

The protein encoded by this gene is a type II transmembrane glycoprotein and a common acute lymphocytic leukemia antigen that is an important cell surface marker in the diagnosis of human acute lymphocytic leukemia (ALL). The encoded protein is present on leukemic cells of pre-B phenotype, which represent 85% of cases of ALL. This protein is not restricted to leukemic cells, however, and is found on a variety of normal tissues. The protein is a neutral endopeptidase that cleaves peptides at the amino side of hydrophobic residues and inactivates several peptide hormones including glucagon, enkephalins, substance P, neurotensin, oxytocin, and bradykinin. [RefSeq]

## Application Notes

Optimal dilution of the Neprilysin antibody should be determined by the researcher.

## Immunogen

A synthetic peptide specific to human CD10 / Neprilysin was used as the immunogen for the Neprilysin antibody.

## Storage

Store the Neprilysin antibody at -20oC.