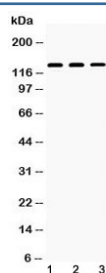


Nephrin Antibody (R32648)

Catalog No.	Formulation	Size
R32648	0.5mg/ml if reconstituted with 0.2ml sterile DI water	100 ug

Bulk quote request

Availability	1-3 business days
Species Reactivity	Human, Mouse, Rat
Format	Antigen affinity purified
Host	Rabbit
Clonality	Polyclonal (rabbit origin)
Isotype	Rabbit IgG
Purity	Antigen affinity
Buffer	Lyophilized from 1X PBS with 2.5% BSA, 0.025% sodium azide
UniProt	O60500
Applications	Western Blot : 0.5-1ug/ml
Limitations	This Nephrin antibody is available for research use only.



Western blot testing of 1) rat kidney, 2) mouse kidney and 3) human 293T lysate with Nephrin antibody at 0.5ug/ml. Expected molecular weight: 134 kDa (unmodified), 150-180 kDa (modified).

Description

NPHS1, also called Nephrin, is mapped to 19q13.12. This gene encodes a member of the immunoglobulin family of cell adhesion molecules that functions in the glomerular filtration barrier in the kidney. Its gene is primarily expressed in renal tissues, and the protein is a type-1 transmembrane protein found at the slit diaphragm of glomerular podocytes. The slit diaphragm is thought to function as an ultrafilter to exclude albumin and other plasma macromolecules in the formation of urine. A defect in the gene for nephrin, NPHS1, is associated with congenital nephrotic syndrome of the Finnish type and causes massive amounts of protein to be leaked into the urine, or proteinuria. NPHS1 is also required for cardiovascular development.

Application Notes

Optimal dilution of the Nephrin antibody should be determined by the researcher.

Immunogen

Amino acids V1084-V1241 from the human protein were used as the immunogen for the Nephrin antibody.

Storage

After reconstitution, the Nephrin antibody can be stored for up to one month at 4oC. For long-term, aliquot and store at -20oC. Avoid repeated freezing and thawing.