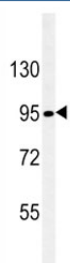


Nephrin Antibody [clone 174CT2.1.1] (F53519)

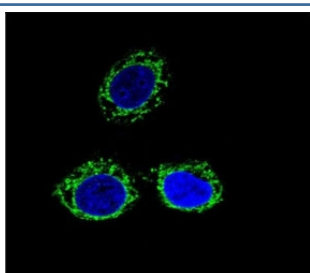
Catalog No.	Formulation	Size
F53519-0.1ML	In ascites with 0.09% sodium azide	0.1 ml

Bulk quote request

Availability	1-3 business days
Species Reactivity	Human
Format	Ascites
Host	Mouse
Clonality	Monoclonal (mouse origin)
Isotype	Mouse IgM, k
Clone Name	174CT2.1.1
Purity	Ascites
UniProt	O60500
Applications	Western Blot : 1:100-1:200 Immunofluorescence : 1:10-1:50
Limitations	This Nephrin antibody is available for research use only.



Nephrin antibody western blot analysis in SK-BR-3 lysate. Ab used at 1:100 dilution.
Predicted molecular weight ~150 kDa but often observed at a lower size.



Confocal immunofluorescent analysis of Nephrin antibody with HeLa cells followed by Alexa Fluor 488-conjugated goat anti-mouse IgG (green). DAPI was used as a nuclear counterstain (blue).

Description

This gene encodes a member of the immunoglobulin family of cell adhesion molecules that functions in the glomerular filtration barrier in the kidney. The gene is primarily expressed in renal tissues, and the protein is a type-1 transmembrane protein found at the slit diaphragm of glomerular podocytes. The slit diaphragm is thought to function as an ultrafilter to exclude albumin and other plasma macromolecules in the formation of urine. Mutations in this gene result in Finnish-type congenital nephrosis 1, characterized by severe proteinuria and loss of the slit diaphragm and foot processes.

Application Notes

Titration of the Nephrin antibody may be required due to differences in protocols and secondary/substrate sensitivity.

Immunogen

A portion of amino acids 1088-1117 from the human protein was used as the immunogen for this Nephrin antibody.

Storage

Aliquot the Nephrin antibody and store frozen at -20oC or colder. Avoid repeated freeze-thaw cycles.