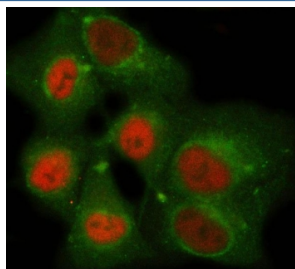


## NEMF Antibody / SDCCAG1 (RQ8180)

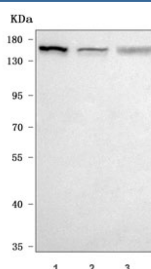
Catalog No.	Formulation	Size
RQ8180	0.5mg/ml if reconstituted with 0.2ml sterile DI water	100 ug

**Bulk quote request**

<b>Availability</b>	1-3 business days
<b>Species Reactivity</b>	Human
<b>Format</b>	Antigen affinity purified
<b>Clonality</b>	Polyclonal (rabbit origin)
<b>Isotype</b>	Rabbit IgG
<b>Purity</b>	Antigen affinity purified
<b>Buffer</b>	Lyophilized from 1X PBS with 2% Trehalose
<b>UniProt</b>	O60524
<b>Localization</b>	Nuclear, cytoplasmic
<b>Applications</b>	Western Blot : 0.5-1ug/ml Immunofluorescence : 5ug/ml Direct ELISA : 0.1-0.5ug/ml
<b>Limitations</b>	This NEMF antibody is available for research use only.



Immunofluorescent staining of FFPE human A549 cells with NEMF antibody (red) and Beta Tubulin mAb (green). HIER: steam section in pH6 citrate buffer for 20 min.



Western blot testing of human 1) 293T, 2) Jurkat and 3) PC-3 cell lysate with NEMF antibody. Predicted molecular weight ~123 kDa, commonly observed at 123-140 kDa.

## Description

Nuclear export mediator factor (NEMF), also called Serologically defined colon cancer antigen 1 (SDCCAG1), is a protein that in humans is encoded by the NEMF gene. This gene encodes a component of the ribosome quality control complex. The encoded protein facilitates the recognition and ubiquitination of stalled 60S subunits by the ubiquitin ligase listerin. A similar protein in fly functions as a tumor suppressor.

## Application Notes

Optimal dilution of the NEMF antibody should be determined by the researcher.

## Immunogen

E. coli-derived recombinant human protein (amino acids H81-R607) was used as the immunogen for the NEMF antibody.

## Storage

After reconstitution, the NEMF antibody can be stored for up to one month at 4oC. For long-term, aliquot and store at -20oC. Avoid repeated freezing and thawing.