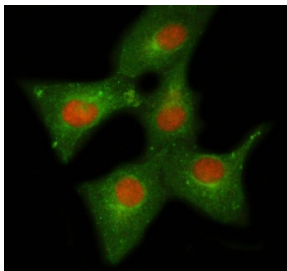


NELFE Antibody / Negative elongation factor E / RD (RQ8172)

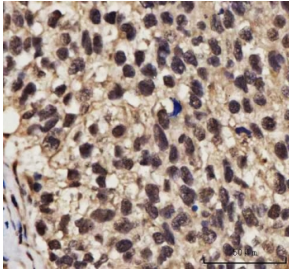
Catalog No.	Formulation	Size
RQ8172	0.5mg/ml if reconstituted with 0.2ml sterile DI water	100 ug

Bulk quote request

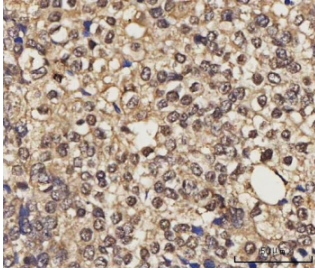
Availability	1-3 business days
Species Reactivity	Human
Format	Antigen affinity purified
Host	Rabbit
Clonality	Polyclonal (rabbit origin)
Isotype	Rabbit IgG
Purity	Antigen affinity purified
Buffer	Lyophilized from 1X PBS with 2% Trehalose
UniProt	P18615
Localization	Nuclear
Applications	Western Blot : 0.5-1ug/ml Immunohistochemistry (FFPE) : 2-5ug/ml Immunofluorescence : 5ug/ml Flow Cytometry : 1-3ug/million cells Direct ELISA : 0.1-0.5ug/ml
Limitations	This NELFE antibody is available for research use only.



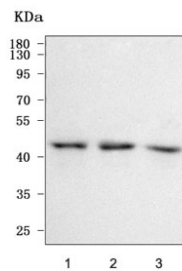
Immunofluorescent staining of FFPE human A549 cells with NELFE antibody (red) and Beta Tubulin mAb (green). HIER: steam section in pH6 citrate buffer for 20 min.



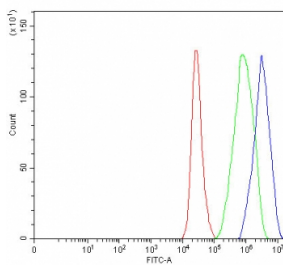
IHC staining of FFPE human lung squamous cell carcinoma tissue with NELFE antibody. HIER: boil tissue sections in pH8 EDTA for 20 min and allow to cool before testing.



IHC staining of FFPE human ovarian cancer tissue with NELFE antibody. HIER: boil tissue sections in pH8 EDTA for 20 min and allow to cool before testing.



Western blot testing of human 1) 293T, 2) HeLa and 3) U-2 OS cell lysate with NELFE antibody. Predicted molecular weight ~43 kDa.



Flow cytometry testing of fixed and permeabilized human 293T cells with NELFE antibody at 1ug/million cells (blocked with goat sera); Red=cells alone, Green=isotype control, Blue= NELFE antibody.

Description

Negative elongation factor E (NELFE), also called RNA-binding protein RD, is part of a complex termed negative elongation factor (NELF) which represses RNA polymerase II transcript elongation. This protein bears similarity to nuclear RNA-binding proteins; however, it has not been demonstrated that this protein binds RNA. The protein contains a tract of alternating basic and acidic residues, largely arginine (R) and aspartic acid (D). The gene localizes to the major histocompatibility complex (MHC) class III region on chromosome 6.

Application Notes

Optimal dilution of the NELFE antibody should be determined by the researcher.

Immunogen

E. coli-derived recombinant human protein (amino acids N262-D378) was used as the immunogen for the NELFE antibody.

Storage

After reconstitution, the NELFE antibody can be stored for up to one month at 4°C. For long-term, aliquot and store at

-20oC. Avoid repeated freezing and thawing.