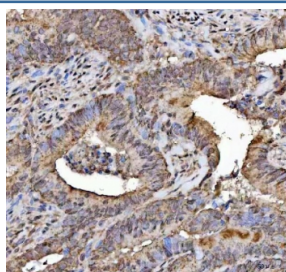


NELF Antibody / NSMF (RQ8374)

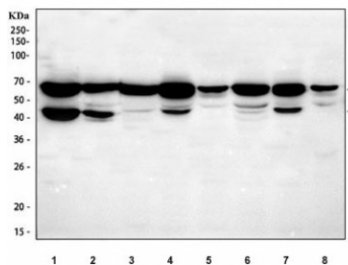
Catalog No.	Formulation	Size
RQ8374	0.5mg/ml if reconstituted with 0.2ml sterile DI water	100 ug

Bulk quote request

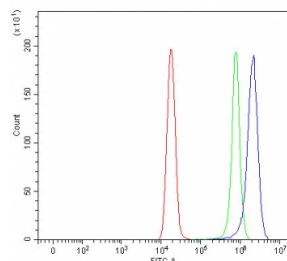
Availability	1-3 business days
Species Reactivity	Human, Mouse, Rat
Format	Antigen affinity purified
Host	Rabbit
Clonality	Polyclonal (rabbit origin)
Isotype	Rabbit IgG
Purity	Antigen affinity purified
Buffer	Lyophilized from 1X PBS with 2% Trehalose
UniProt	Q6X4W1
Applications	Western Blot : 0.5-1ug/ml Immunohistochemistry (FFPE) : 2-5ug/ml Flow Cytometry : 1-3ug/million cells Direct ELISA : 0.1-0.5ug/ml
Limitations	This NELF antibody is available for research use only.



IHC staining of FFPE human colorectal adenocarcinoma tissue with NELF antibody.
HIER: boil tissue sections in pH8 EDTA for 20 min and allow to cool before testing.



Western blot testing of 1) human HepG2, 2) human HaCaT, 3) rat liver, 4) rat RH35, 5) rat C6, 6) mouse liver, 7) mouse HEPA1/6 and 8) mouse NIH 3T3 cell lysate with NELF antibody. Predicted molecular weight ~44 kDa and 57-60 kDa (multiple isoforms).



Flow cytometry testing of fixed and permeabilized human HeLa cells with NELF antibody at 1ug/million cells (blocked with goat sera); Red=cells alone, Green=isotype control, Blue= NELF antibody.

Description

NMDA receptor synaptonuclear signaling and neuronal migration factor (NSMF), also called Nasal embryonic LHRH factor (NELF), is involved in guidance of olfactory axon projections and migration of luteinizing hormone-releasing hormone neurons. Defects in this gene are a cause of idiopathic hypogonadotropic hypogonadism (IHH). Several transcript variants encoding different isoforms have been found for this gene.

Application Notes

Optimal dilution of the NELF antibody should be determined by the researcher.

Immunogen

An E.coli-derived human recombinant protein (E14-D527) was used as the immunogen for the NELF antibody.

Storage

After reconstitution, the NELF antibody can be stored for up to one month at 4°C. For long-term, aliquot and store at -20°C. Avoid repeated freezing and thawing.