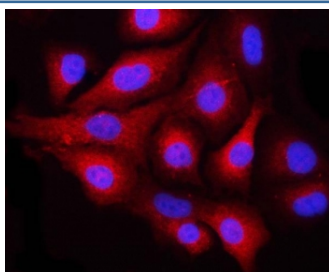


## NEK6 Antibody / NimA-related protein kinase 6 (RQ8190)

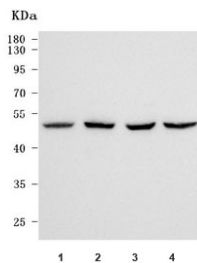
Catalog No.	Formulation	Size
RQ8190	0.5mg/ml if reconstituted with 0.2ml sterile DI water	100 ug

**Bulk quote request**

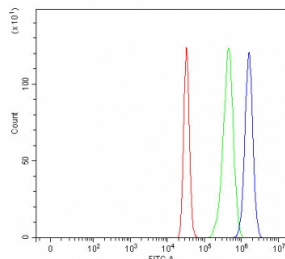
<b>Availability</b>	1-3 business days
<b>Species Reactivity</b>	Human
<b>Format</b>	Antigen affinity purified
<b>Clonality</b>	Polyclonal (rabbit origin)
<b>Isotype</b>	Rabbit IgG
<b>Purity</b>	Antigen affinity purified
<b>Buffer</b>	Lyophilized from 1X PBS with 2% Trehalose
<b>UniProt</b>	Q9HC98
<b>Localization</b>	Nuclear, cytoplasmic
<b>Applications</b>	Western Blot : 0.5-1ug/ml Immunofluorescence : 5ug/ml Flow Cytometry : 1-3ug/million cells Direct ELISA : 0.1-0.5ug/ml
<b>Limitations</b>	This NEK6 antibody is available for research use only.



Immunofluorescent staining of FFPE human A549 cells with NEK6 antibody (red) and DAPI nuclear stain (blue). HIER: steam section in pH6 citrate buffer for 20 min.



Western blot testing of human 1) HepG2, 2) HeLa, 3) 293T and 4) HT-1080 cell lysate with NEK6 antibody. Predicted molecular weight: 35-40 kDa (multiple isoforms), commonly observed at 35-45 kDa.



Flow cytometry testing of fixed and permeabilized human HepG2 cells with NEK6 antibody at 1ug/million cells (blocked with goat sera); Red=cells alone, Green=isotype control, Blue= NEK6 antibody.

## Description

Serine/threonine-protein kinase Nek6 is an enzyme that in humans is encoded by the NEK6 gene. The protein encoded by this gene is a kinase required for progression through the metaphase portion of mitosis. Inhibition of the encoded protein can lead to apoptosis. This protein also can enhance tumorigenesis by suppressing tumor cell senescence. Several transcript variants encoding a few different isoforms have been found for this gene.

## Application Notes

Optimal dilution of the NEK6 antibody should be determined by the researcher.

## Immunogen

E. coli-derived recombinant human protein (amino acids N16-T313) was used as the immunogen for the NEK6 antibody.

## Storage

After reconstitution, the NEK6 antibody can be stored for up to one month at 4oC. For long-term, aliquot and store at -20oC. Avoid repeated freezing and thawing.