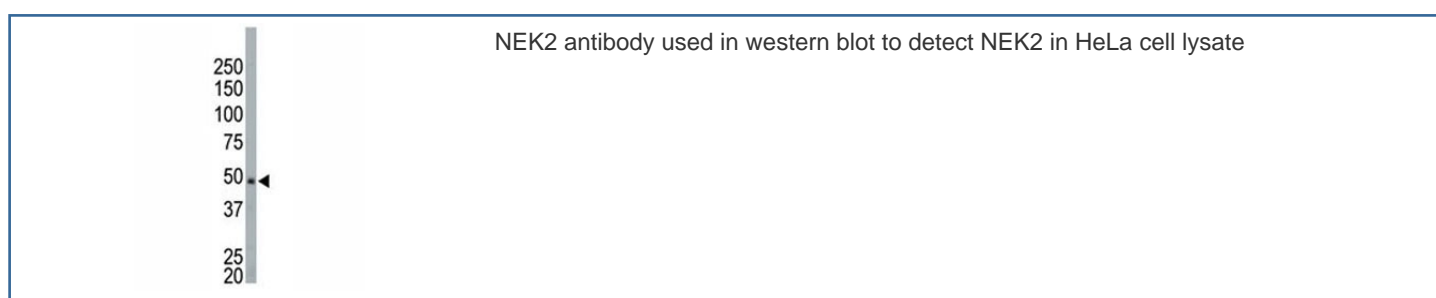


NEK2 Antibody (F40172)

Catalog No.	Formulation	Size
F40172-0.4ML	In 1X PBS, pH 7.4, with 0.09% sodium azide	0.4 ml
F40172-0.08ML	In 1X PBS, pH 7.4, with 0.09% sodium azide	0.08 ml

[Bulk quote request](#)

Availability	1-3 business days
Species Reactivity	Human
Format	Purified
Clonality	Polyclonal (rabbit origin)
Isotype	Rabbit Ig
Purity	Purified
UniProt	P51955
Applications	Western Blot : 1:1000
Limitations	This NEK2 antibody is available for research use only.



Description

NEK2 is closely related in its catalytic domain to the serine/threonine protein kinase NIMA of *Aspergillus nidulans* which is required for entry into mitosis and may function in parallel to the universal mitotic inducer p34cdc2. Like NIMA, the Nek2 protein is almost undetectable during G1 but accumulates progressively throughout S, reaching maximal levels in late G2. These observations demonstrate that NEK2 resembles *Aspergillus* NIMA, both in its catalytic domain, and cell cycle-dependent expression. Recombinant NEK2 is active as a serine/threonine-specific protein kinase and may undergo autophosphorylation. Both human NEK2 and fungal NIMA phosphorylate a similar, but not identical, set of proteins and synthetic peptides. NEK2 is shown to be expressed most abundantly in adult testis and there is increasing evidence that NEK2 is abnormally expressed in a wide variety of human cancers. This antibody is specific to isoform 2 of NEK2.

Application Notes

Titration of the NEK2 antibody may be required due to differences in protocols and secondary/substrate sensitivity.

Immunogen

A portion of amino acids 350-382 from the human protein was used as the immunogen for this NEK2 antibody.

Storage

Aliquot the NEK2 antibody and store frozen at -20oC or colder. Avoid repeated freeze-thaw cycles.