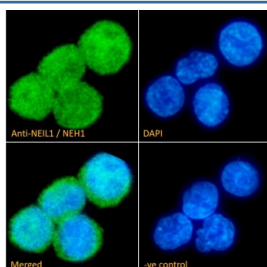


NEIL1 Antibody (R33483)

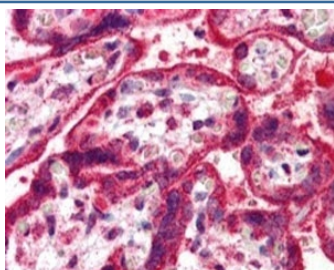
Catalog No.	Formulation	Size
R33483-100UG	0.5 mg/ml in 1X TBS, pH7.3, with 0.5% BSA (US sourced) and 0.02% sodium azide	100 ug

[Bulk quote request](#)

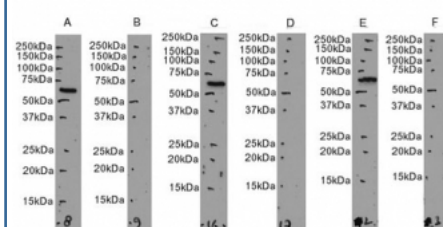
Availability	1-3 business days
Species Reactivity	Human
Format	Antigen affinity purified
Host	Goat
Clonality	Polyclonal (goat origin)
Isotype	Goat Ig
Purity	Antigen affinity
Gene ID	79661
Applications	Immunohistochemistry (FFPE) : 5-10ug/ml Western Blot : 2-3ug/ml Immunofluorescence : 10ug/ml ELISA (peptide) LOD : 1:16000
Limitations	This NEIL1 antibody is available for research use only.



Immunofluorescent staining of fixed and permeabilized human U937 cells with NEIL1 antibody (green) at 10ug/ml and DAPI nuclear stain (blue).



IHC testing of FFPE human placenta with NEIL1 antibody at 5ug/ml. HIER: steamed with pH6 citrate buffer, AP-staining.



Western blot testing of A) human Daudi cell lysate without immunizing peptide, B) human Daudi cell lysate with immunizing peptide, C) human U937 cell lysate without immunizing peptide, D) human U937 cell lysate with immunizing peptide, E) human HEK293 cell lysate (nuclear fraction) without immunizing peptide, F) human HEK293 cell lysate (nuclear fraction) with immunizing peptide, with NEIL1 antibody.

Description

Additional name(s) for this target protein: Nei endonuclease VIII-like 1

Application Notes

Optimal dilution of the NEIL1 antibody should be determined by the researcher.

Immunogen

Amino acids DIPSLEPEGTSAS were used as the immunogen for this NEIL1 antibody.

Storage

Aliquot and store the NEIL1 antibody at -20oC.