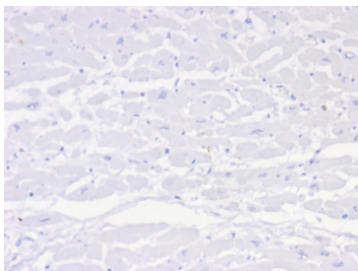


Negative Control Antibody for Mouse Monoclonals [clone IGG1/453] (V8785)

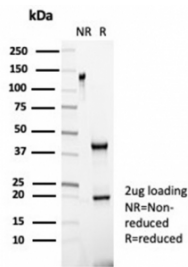
Catalog No.	Formulation	Size
V8785-100UG	0.2 mg/ml in 1X PBS with 0.1 mg/ml BSA (US sourced), 0.05% sodium azide	100 ug
V8785-20UG	0.2 mg/ml in 1X PBS with 0.1 mg/ml BSA (US sourced), 0.05% sodium azide	20 ug
V8785SAF-100UG	1 mg/ml in 1X PBS; BSA free, sodium azide free	100 ug

Bulk quote request

Availability	1-3 business days
Format	Purified
Host	Mouse
Clonality	Monoclonal (mouse origin)
Isotype	Mouse IgG1, kappa
Clone Name	IGG1/453
Purity	Protein A affinity
UniProt	Not Applicable
Applications	ELISA; Flow Cytometry; Immunofluorescence; Immunoprecipitation; Western Blot; Immunohistochemistry : use at the same concentration as the primary antibody being controlled for
Limitations	This Negative control antibody is available for research use only.



IHC staining of FFPE human heart tissue with Negative control antibody (clone IGG1/453). HIER: boil tissue sections in pH 9 10mM Tris with 1mM EDTA for 20 min and allow to cool before testing.



SDS-PAGE analysis of purified, BSA-free Negative control antibody (IGG1/453) as confirmation of integrity and purity.

Description

To serve as a true negative control for various procedures, this monoclonal IgG should be used under the identical conditions and at the same dilution as the rabbit monoclonal antibody being used for a positive reaction.

Application Notes

Optimal dilution of the Negative control antibody should be determined by the researcher.

Immunogen

Recombinant full-length human IG1R protein was used as the immunogen for the Negative control antibody.

Storage

Aliquot the Negative control antibody and store frozen at -20oC or colder. Avoid repeated freeze-thaw cycles.