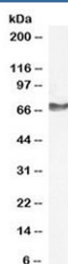


NEFL Antibody (Neurofilament light chain) (R36472)

Catalog No.	Formulation	Size
R36472-100UG	0.5 mg/ml in 1X TBS, pH7.3, with 0.5% BSA (US sourced) and 0.02% sodium azide	100 ug

[Bulk quote request](#)

Availability	1-3 business days
Species Reactivity	Human, Mouse, Rat, Dog, Cow, Pig
Format	Antigen affinity purified
Host	Goat
Clonality	Polyclonal (goat origin)
Isotype	Goat Ig
Purity	Antigen affinity
UniProt	P07196
Applications	Western Blot : 0.5-2ug/ml ELISA (peptide) LOD : 1:4000
Limitations	This NEFL antibody is available for research use only.



Western blot testing of human KELLY cell lysate (neuroblastoma line) with NEFL antibody at 1ug/ml. Predicted molecular weight: 62-68 kDa.

Description

Neurofilaments (NF) are the 10 nanometer or intermediate filaments found in neurons. They are a major component of the neuronal cytoskeleton, and are believed to function primarily to provide structural support for the axon and to regulate axon diameter. [Wiki]

Application Notes

Optimal dilution of the NEFL antibody should be determined by the researcher.

Immunogen

Amino acids EKQLQELEDKQNAD were used as the immunogen for this NEFL antibody.

Storage

Aliquot and store the NEFL antibody at -20oC.