

NEDD9 Antibody / hEF1 / CAS-L (F43986)

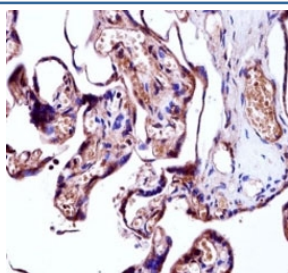
Catalog No.	Formulation	Size
F43986-0.4ML	In 1X PBS, pH 7.4, with 0.09% sodium azide	0.4 ml
F43986-0.08ML	In 1X PBS, pH 7.4, with 0.09% sodium azide	0.08 ml

[Bulk quote request](#)

Availability	1-3 business days
Species Reactivity	Human
Format	Antigen affinity purified
Host	Rabbit
Clonality	Polyclonal (rabbit origin)
Isotype	Rabbit Ig
Purity	Antigen affinity
UniProt	Q14511
Applications	Western Blot : 1:1000 IHC (Paraffin) : 1:10-1:50
Limitations	This NEDD9 antibody is available for research use only.

250
130
95
72
55

NEDD9 antibody western blot analysis in MCF-7 lysate. Predicted molecular weight: ~93kDa.



NEDD9 antibody immunohistochemistry analysis in formalin fixed and paraffin embedded human placenta tissue.

Description

Docking protein which plays a central coordinating role for tyrosine-kinase-based signaling related to cell adhesion. May function in transmitting growth control signals between focal adhesions at the cell periphery and the mitotic spindle in response to adhesion or growth factor signals initiating cell proliferation. May play an important role in integrin beta-1 or B cell antigen receptor (BCR) mediated signaling in B-and T-cells. Integrin beta-1 stimulation leads to recruitment of various proteins including CRK, NCK and SHPTP2 to the tyrosine phosphorylated form.

Application Notes

Titration of the NEDD9 antibody may be required due to differences in protocols and secondary/substrate sensitivity.

Immunogen

A portion of amino acids 335-363 from the human protein was used as the immunogen for this NEDD9 antibody.

Storage

Aliquot the NEDD9 antibody and store frozen at -20oC or colder. Avoid repeated freeze-thaw cycles.