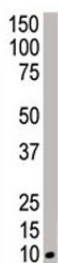


## NEDD8 Antibody (F42040)

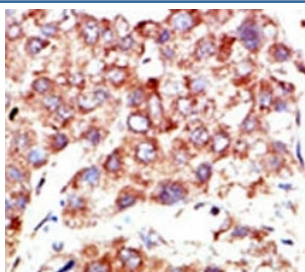
Catalog No.	Formulation	Size
F42040-0.4ML	In 1X PBS, pH 7.4, with 0.09% sodium azide	0.4 ml
F42040-0.08ML	In 1X PBS, pH 7.4, with 0.09% sodium azide	0.08 ml

[Bulk quote request](#)

<b>Availability</b>	1-3 business days
<b>Species Reactivity</b>	Human
<b>Predicted Reactivity</b>	Mouse, Rat, Bovine, Rabbit
<b>Format</b>	Purified
<b>Clonality</b>	Polyclonal (rabbit origin)
<b>Isotype</b>	Rabbit Ig
<b>Purity</b>	Purified
<b>UniProt</b>	Q15843
<b>Localization</b>	Nuclear, cytoplasmic
<b>Applications</b>	Western Blot : 1:1000 IHC (Paraffin) : 1:50-1:100
<b>Limitations</b>	This NEDD8 antibody is available for research use only.



Western blot analysis of NEDD8 antibody and HeLa cell lysate. Predicted molecular weight ~9 kDa.



IHC analysis of FFPE human hepatocarcinoma stained with the NEDD8 antibody

## Description

NEDD8 is a ubiquitin-like protein which plays an important role in cell cycle control and embryogenesis. Covalent attachment to its substrates requires prior activation by the E1 complex UBE1C-APPBP1 and linkage to the E2 enzyme UBE2M. Attachment of NEDD8 to cullins activates their associated E3 ubiquitin ligase activity, and thus promotes polyubiquitination and proteasomal degradation of cyclins and other regulatory proteins.

## Application Notes

Titration of the NEDD8 antibody may be required due to differences in protocols and secondary/substrate sensitivity.

## Immunogen

A portion of amino acids 1-32 from the human protein was used as the immunogen for this NEDD8 antibody.

## Storage

Aliquot the NEDD8 antibody and store frozen at -20oC or colder. Avoid repeated freeze-thaw cycles.