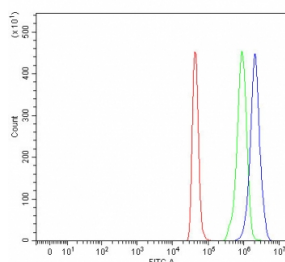


NEDD1 Antibody (RQ8247)

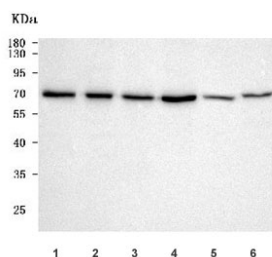
Catalog No.	Formulation	Size
RQ8247	0.5mg/ml if reconstituted with 0.2ml sterile DI water	100 ug

Bulk quote request

Availability	1-3 business days
Species Reactivity	Human, Mouse, Rat
Format	Antigen affinity purified
Clonality	Polyclonal (rabbit origin)
Isotype	Rabbit IgG
Purity	Antigen affinity purified
Buffer	Lyophilized from 1X PBS with 2% Trehalose
UniProt	Q8NHV4
Applications	Western Blot : 0.5-1ug/ml Flow Cytometry : 1-3ug/million cells Direct ELISA : 0.1-0.5ug/ml
Limitations	This NEDD1 antibody is available for research use only.



Flow cytometry testing of fixed and permeabilized human SH-SY5Y cells with NEDD1 antibody at 1ug/million cells (blocked with goat sera); Red=cells alone, Green=isotype control, Blue= NEDD1 antibody.



Western blot testing of 1) human 293T, 2) human SH-SY5Y, 3) human Jurkat, 4) human HeLa, 5) rat brain and 6) mouse brain tissue lysate with NEDD1 antibody. Predicted molecular weight: ~72 kDa, ~62 kDa (two isoforms).

Description

Neural precursor cell expressed, developmentally down-regulated 1, also known as Nedd1, is a human gene and encodes the protein NEDD1. NEDD1 is required for mitosis progression. NEDD1 promotes the nucleation of microtubules from the spindle.

Application Notes

Optimal dilution of the NEDD1 antibody should be determined by the researcher.

Immunogen

E. coli-derived recombinant human protein (amino acids D191-E647) was used as the immunogen for the NEDD1 antibody.

Storage

After reconstitution, the NEDD1 antibody can be stored for up to one month at 4°C. For long-term, aliquot and store at -20°C. Avoid repeated freezing and thawing.