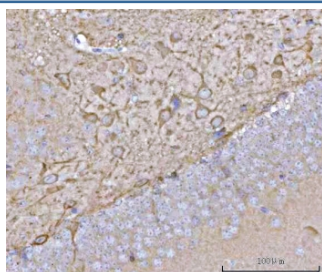


NECAB1 Antibody / N-terminal EF-hand calcium binding protein 1 (RQ8232)

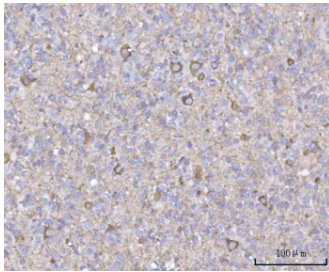
Catalog No.	Formulation	Size
RQ8232	0.5mg/ml if reconstituted with 0.2ml sterile DI water	100 ug

Bulk quote request

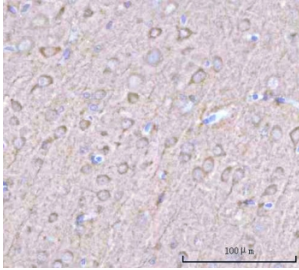
Availability	1-3 business days
Species Reactivity	Human, Mouse, Rat
Format	Antigen affinity purified
Clonality	Polyclonal (rabbit origin)
Isotype	Rabbit IgG
Purity	Antigen affinity purified
Buffer	Lyophilized from 1X PBS with 2% Trehalose
UniProt	Q8N987
Localization	Nuclear, cytoplasmic
Applications	Western Blot : 0.5-1ug/ml Immunohistochemistry (FFPE) : 2-5ug/ml Immunofluorescence : 5ug/ml Direct ELISA : 0.1-0.5ug/ml
Limitations	This NECAB1 antibody is available for research use only.



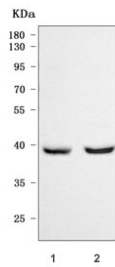
IHC staining of FFPE mouse brain tissue with NECAB1 antibody. HIER: boil tissue sections in pH8 EDTA for 20 min and allow to cool before testing.



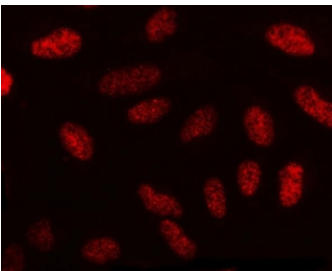
IHC staining of FFPE human glioblastoma tissue with NECAB1 antibody. HIER: boil tissue sections in pH8 EDTA for 20 min and allow to cool before testing.



IHC staining of FFPE rat brain tissue with NECAB1 antibody. HIER: boil tissue sections in pH8 EDTA for 20 min and allow to cool before testing.



Western blot testing of 1) mouse brain and 2) rat brain tissue lysate with NECAB1 antibody. Predicted molecular weight ~41 kDa.



Immunofluorescent staining of FFPE human U-2 OS cells with NECAB1 antibody (red). HIER: steam section in pH6 citrate buffer for 20 min.

Description

NECAB1, also named as EFCBP1, is a brain-specifically expressed gene with highest abundance in temporal lobe, encodes a protein containing EF-hand and antibiotic biosynthesis monooxygenase domains Short Communication.

Application Notes

Optimal dilution of the NECAB1 antibody should be determined by the researcher.

Immunogen

E. coli-derived recombinant human protein (amino acids E16-E296) was used as the immunogen for the NECAB1 antibody.

Storage

After reconstitution, the NECAB1 antibody can be stored for up to one month at 4oC. For long-term, aliquot and store at -20oC. Avoid repeated freezing and thawing.

