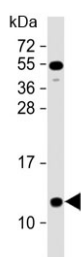


## NDUFA2 Antibody / C-Terminal Region (F54206)

Catalog No.	Formulation	Size
F54206-0.2ML	In 1X PBS, pH 7.4, with 0.09% sodium azide	0.2 ml
F54206-0.05ML	In 1X PBS, pH 7.4, with 0.09% sodium azide	0.05 ml

[Bulk quote request](#)

<b>Availability</b>	1-3 business days
<b>Species Reactivity</b>	Human
<b>Predicted Reactivity</b>	Bovine
<b>Format</b>	Antigen affinity purified
<b>Clonality</b>	Polyclonal
<b>Isotype</b>	Rabbit Ig
<b>Purity</b>	Peptide affinity purified
<b>UniProt</b>	O43678
<b>Applications</b>	Western Blot : 1:2000
<b>Limitations</b>	This NDUFA2 antibody is available for research use only.



Western blot testing of human heart lysate with NDUFA2 antibody at 1:2000. Predicted molecular weight ~11 kDa.

## Description

Accessory subunit of the mitochondrial membrane respiratory chain NADH dehydrogenase (Complex I), that is believed not to be involved in catalysis. Complex I functions in the transfer of electrons from NADH to the respiratory chain. The immediate electron acceptor for the enzyme is believed to be ubiquinone.

## Application Notes

The stated application concentrations are suggested starting points. Titration of the NDUFA2 antibody may be required due to differences in protocols and secondary/substrate sensitivity.

## Immunogen

A portion of amino acids 62-96 from the C-terminal region of the human protein was used as the immunogen for the NDUFA2 antibody.

## Storage

Aliquot the NDUFA2 antibody and store frozen at -20oC or colder. Avoid repeated freeze-thaw cycles.